

B O O K I N G G U I D E



telstra  delaide festival 96

M A R C H 1 - 1 7

 **Telstra**

THE ADELAIDE FESTIVAL GRATEFULLY ACKNOWLEDGES THE GENEROUS SUPPORT OF THE FOLLOWING CORPORATIONS

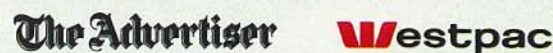
NAMING RIGHTS SPONSOR



KEY CORPORATE SPONSORS



CORPORATE SPONSORS



OFFICIAL SUPPLIERS

OFFICIAL BREWER OFFICIAL SOFT DRINK OFFICIAL CREDIT CARD ARTISTS' TRAVEL MEDIA MONITORS



WE ACKNOWLEDGE THE GENEROUS SUPPORT OF THE SA TAXI INDUSTRY THROUGH THE PASSENGER TRANSPORT RESEARCH AND DEVELOPMENT FUND

WITH THANKS TO



THE ADELAIDE FESTIVAL GRATEFULLY ACKNOWLEDGES THE GENEROUS ASSISTANCE RECEIVED FROM THE STATE GOVERNMENT OF SOUTH AUSTRALIA THROUGH THE DEPARTMENT FOR THE ARTS & CULTURAL DEVELOPMENT; ADELAIDE FESTIVAL CENTRE TRUST; ALLIANCE FRANÇAISE; ASSOCIATION FRANÇAISE D'ACTION ARTISTIQUE; THE AUSTRALIA COUNCIL; AUSTRALIAN BROADCASTING CORPORATION; AUSTRALIAN DIPLOMATIC STAFF ANKARA, PARIS, TOKYO; AUSTRALIAN TOURISM COMMISSION; THE BRITISH COUNCIL; CONFEDERATION OF AUSTRALASIAN ARTS PRESENTERS; THE DEPARTMENT OF FOREIGN AFFAIRS & TRADE; EDUCATION DEPARTMENT OF SA; HONG KONG ARTS FESTIVAL; DEPARTMENT OF IMMIGRATION & ETHNIC AFFAIRS; INDIAN COUNCIL FOR CULTURAL RELATIONS; THE JAPAN FOUNDATION; MUSICA VIVA AUSTRALIA; NATARAJ CULTURAL CENTRE; FLEMISH MINISTRY OF CULTURE; NEW ZEALAND FESTIVAL OF THE ARTS; FESTIVAL OF PERTH; MINISTRY OF CULTURE, REPUBLIC OF SLOVENIA; MINISTRY OF FOREIGN AFFAIRS, SPAIN; SOUTH AUSTRALIA HOUSE: LONDON; SOUTH AUSTRALIAN TOURISM COMMISSION; SA YOUTH PERFORMING ARTS BOARD.

THE 19TH BIENNIAL ADELAIDE FESTIVAL

PATRON  
HER MAJESTY QUEEN ELIZABETH  
THE QUEEN MOTHER

VICE PATRON  
HER EXCELLENCY THE HONOURABLE  
DAME ROMA MITCHELL AC, DBE  
GOVERNOR OF SOUTH AUSTRALIA

ADELAIDE FESTIVAL BOARD  
MR ANDREW KILLEY (CHAIRMAN)  
MR KEITH SMITH (DEPUTY CHAIR)  
MR JOHN BISHOP AO (TO SEPTEMBER 1995)  
MR BILL COSSEY  
MS LISA FAHEY  
MR JOHN GADEN  
MR JOHN POTTER  
MS JANET WORTH  
MS TERESA CREA  
MR FRANK FORD  
MR ILAN HERSHMAN  
DR EDWARD TWEDDELL

FRIENDS' MANAGEMENT COMMITTEE  
IAN CARRIG  
WRITERS' WEEK  
GREG MACKIE

ARTISTIC DIRECTOR  
GENERAL MANAGER  
ASSISTANT TO ARTISTIC DIRECTOR  
EXEC. SECRETARY  
MARKETING & DEVELOPMENT DIRECTOR  
DEVELOPMENT MANAGER  
MARKETING MANAGER  
MARKETING OFFICER  
MARKETING SECRETARY  
OPERATIONS DIRECTOR  
OPERATIONS CO-ORDINATOR  
OPERATIONS SECRETARY  
PRODUCTION MANAGER  
VISUAL ARTS CO-ORDINATOR  
WRITERS' WEEK EXECUTIVE OFFICER  
RECEPTIONIST  
PRODUCTION CO-ORDINATOR  
OUTDOOR DESIGN  
OUTDOOR EVENTS  
BARRIE KOSKY  
IAN SCOBIE  
LORETTA BUSBY  
BEV PROSSER  
MARK COLLEY  
MARK MCGILL  
SANDY MEAKIN  
KATE JORDAN-MOORE  
JEANNE EVES  
DAVID MALACARI  
LOUISE FOX  
LESLEY NEWTON  
GEOFF COBHAM  
DAVID O'HALLORAN  
ROSE WIGHT  
BRONTE DE YOUNG  
EMMA BAILY  
GLEN ASH  
VISIBLE MANAGEMENT

THE FESTIVAL GRATEFULLY ACKNOWLEDGES THE SUPPORT OF THE STAFF OF THE ADELAIDE FESTIVAL CENTRE TRUST, IN PARTICULAR  
FINANCE & ADMINISTRATION MANAGER  
FESTIVAL ACCOUNTANT  
HUMAN RESOURCES MANAGER  
BASS CLIENT SERVICES MANAGER  
EDUCATION OFFICER  
THEATRES MANAGER  
MECHANICAL SERVICES SUPERVISOR  
PRODUCTION CO-ORDINATOR  
JUJUE KELDOLUIS  
REBECCA NEAVE  
IAN BARTON  
MURIEL POULTON  
BRONWYN SUGARS  
JOHN GLENNON  
BILL MCINERNEY  
MICHAEL MCCABE

TELSTRA ADELAIDE FESTIVAL 96 BOOKING GUIDE:  
EDITOR: SANDY MEAKIN, CO-ORDINATION: JEANNE EVES  
DESIGN AND PRODUCTION: ADRIAN ADAMS / SHOWADS INTERACTIVE  
PRINTED BY PROGRESS PRESS PTY LTD, MELBOURNE FOR THE PUBLISHERS  
THE WEEKEND AUSTRALIAN MAGAZINE, OCTOBER 21, 1995.

# telstra adelaide festival 96

MARCH 1 - 17

WELCOME TO THE TELSTRA ADELAIDE FESTIVAL 96 AND TO THE OFFICIAL BOOKING GUIDE FOR AUSTRALIA'S MOST EXCITING CULTURAL CELEBRATION.

For three weeks in March, Adelaide will be the international focus for the arts. In the tradition established over thirty-six years, audiences and artists from around the world will visit Adelaide to perform, debate, discuss and delight in a fabulous collection of Festival experiences.

Please join us between March 1 and 17 and be part of the wonderful cultural feast that only Adelaide, with its fine food and wines and the diverse programming of its Festival, can provide.

HON. DEAN BROWN MP  
Premier of South Australia

HON. DIANA LAIDLAW MLC  
Minister for the Arts

The 19th Biennial Adelaide Festival - Australia's International Arts Festival.

17 DAYS AND NIGHTS OF DEBATE, DISSENT, ENTERTAINMENT AND EUPHORIA.

ECSTASY [N. EXALTED FEELING, RAPTURE (ESP. OF DELIGHT); STATE OF NERVES IN WHICH MIND IS OCCUPIED SOLELY BY ONE IDEA; TRANCE; POETIC FRENZY]

Experience some of the world's leading artists as they electrify, provoke, amuse and transform you. Australia's largest multi-arts celebration of music, dance, theatre, literature and visual arts.

MAP [N. REPRESENTATION OF (PART OF) EARTH'S SURFACE, SHOWING PHYSICAL AND POLITICAL FEATURES ETC., OR OF THE HEAVENS]

Experience work from the cities of Tel Aviv, St Petersburg, New York, Ljubljana, Johannesburg, Barcelona, Melbourne, Brussels, Adelaide, Hachinohe, Paris, Lhasa, Copenhagen, London, Delhi and Konya.

UTOPIA [N. IDEALLY PERFECT PLACE OR STATE OF THINGS (= NOWHERE, F.G.K OU(NOT) + TOPOS (PLACE)]

Experience the political Utopia, the religious Utopia, the abstract Utopia, the fantastical Utopia, the geographic Utopia and the destroyed Utopia.

17 DAYS & NIGHTS OF MIND-BLOWING, FOOT-STOMPING, MOUTH-SCREAMING INTOXICATION.

Map your way through the Festival program and experience a joyous celebration of artists and their work.

BARRIE KOSKY  
Artistic Director



# batsheva dance company

"... TRULY BREATHTAKING BEAUTY ... (THE) DANCERS SHRIEK, SHOUT, EXPLODE IN HYSTERICAL LAUGHTER AND FALL PREY TO UNCONTROLLABLE ERUPTIONS OF ANGER ... THE AUDIENCE BY THEN WAS WORKED UP TO AN IMPRESSIVE OUTBREAK OF CHEERS."

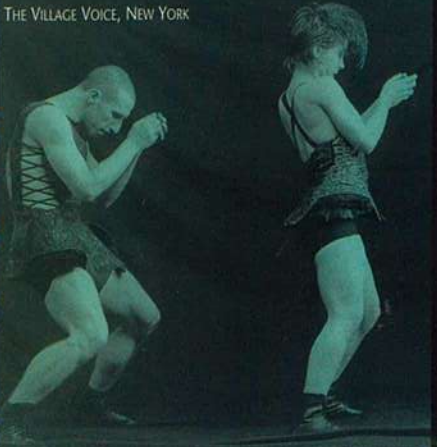
THE TIMES, LONDON

For the first time in Australia and only at the Telstra Adelaide Festival 96 - the explosive and electrifying energy of Israel's leading contemporary dance company.

After triumphant tours of Europe and America, BATSHEVA will perform two full length works choreographed by their artistic director Ohad Naharin: ANAPHASE and MABUL

"IF YOU COULD HOLD ONE OF OHAD NAHARIN'S DANCES IN YOUR HAND, IT WOULD FEEL SMOOTH. THINK OF A POLISHED STONE, IT LOOKS LIKE A PIECE OF SECRET SCULPTURE, BUT HURL IT AND IT BECOMES A WEAPON."

THE VILLAGE VOICE, NEW YORK



## anaphase

ANAPHASE is a totally captivating event touching all human senses. The powerful group movement, the hypnotizing percussion rhythm, the humorous songs, absorbing solos and electrifying energy lead the audience into a world of memories, desires, emotions, delirium and joy.

In ANAPHASE, Artistic Director and Choreographer Ohad Naharin continues the endless exploration of his primary source of inspiration - the mysterious, sensuous, exciting and most unpredictable of all - the human body.

Naharin defies the boundaries between styles and forms, mixing theatre, dance, opera, film, rock music and featuring music by Aaron Copeland, Arvo Pärt, Xenakis and others. This is a unique spectacle involving over thirty dancers and musicians.

### FESTIVAL THEATRE

March 1,2,4 at 8pm

Duration: 1hr 30 mins (no interval)

A Res \$50/\$42(Friends)/\$38 (SPU)

B Res \$42/\$36(Friends)/\$30 (SPU)

C Res \$30/\$25(Friends)/\$20 (SPU)

BATSHEVA DANCE COMPANY IS SPONSORED BY THE MINISTRY OF SCIENCE AND THE ARTS, THE AMERICA-ISRAEL CULTURAL FOUNDATION, THE TEL AVIV/JAFFA MUNICIPALITY AND MIGDAL INSURANCE GROUP LTD, AND THE TOUR TO ADELAIDE IS SUPPORTED BY THE DIVISION OF CULTURAL AND SCIENTIFIC AFFAIRS, MINISTRY OF FOREIGN AFFAIRS, ISRAEL.

## mabul

Among the full length works of Ohad Naharin, this is the richest, most sophisticated and complete. MABUL, which comes from the Hebrew word for a flood, represents a modern urban society where fragility and lyricism turn within a second into dangerous and violent acrobatics. Violence, delicacy, humour and astonishing physical athleticism make MABUL an evening of unforgettable contemporary dance featuring the music of Vivaldi, Arvo Pärt, John Zorn and Carl Orff.

"I WOULD LIKE TO CREATE LIKE CALVINO WRITES. I WOULD LIKE TO DANCE THE WAY MIRO PAINTS AND ARETHA FRANKLIN SINGS"

OHAD NAHARIN

### PLAYHOUSE

March 7, 8 at 8pm

March 9,10 at 2pm

Duration: 1hr 15 mins (no interval)

A Res \$50/\$42(Friends)/\$38 (SPU)

B Res \$42/\$36(Friends)/\$30 (SPU)



# The Whirling Dervishes

## and the Turkish Mystical Music State Ensemble

From the mystical Turkish city of Konya comes one of the most mesmerising and graceful dance rituals in the world - twenty-nine dancers, singers and musicians, performing for the first time in Australia and only at the Telstra Adelaide Festival 96.

In Adelaide, THE WHIRLING DERVISHES will introduce the phenomenon that has fascinated people for hundreds of years. Their performances outdoors - at night under the stars - will provide festival-goers with a respite from the hurly-burly of the festival as well as a glimpse of unforgettable beauty.

Founded by the great philosopher and writer Mevlana Celeleddin Rumi in the 13th century, the ritual of the Mevlevi sect - called the sema - is a serious religious ritual performed by Muslim priests in a trance as they pray to Allah. Mevlevi believed that during the sema the soul was released from earthly ties, and able to freely and jubilantly commune with the divine.

During the ceremony, the dervishes take off black cloaks to reveal the tennure (white religious robes with voluminous skirts). They turn independently, shoulder to shoulder, both around their own axis and around other dervishes, representing the earth revolving on its own axis while orbiting the sun.

The dervishes silently perform the sema, making small, controlled movements of hands, head and arms as they whirl. They are accompanied by music, drums and chanting as the ritual gradually transforms itself into rapid, spinning ecstasy.

**“LOVE IS A BOUNDLESS OCEAN, IN WHICH THE HEAVENS ARE BUT A FLAKE OF FOAM. KNOW THAT ALL THE WHEELING HEAVENS ARE TURNED BY WAVES OF LOVE: WERE IT NOT FOR LOVE THE WORLD WOULD BE FROZEN.”**

MEVLANA CELELEDDIN RUMI

**RED SQUARE - TORRENS PARADE GROUNDS**  
March 3,4,6,8,9,10 at 8.30pm

\$30/\$26(Friends)/\$21(SPU)

Duration: 1hr 30 mins (no interval)

**THE TURKISH MYSTICAL MUSIC STATE ENSEMBLE IN CONCERT**

Three concerts of unforgettable Turkish and Arabic music from the instrumentalists and singers of the Turkish Mystical Music State Ensemble

**ELDER HALL**  
March 6,8 at 1pm

\$18/\$15(Friends)/\$12(SPU)

Duration: 1hr

**ELDER HALL**  
March 7 at 5.45pm

\$25/\$21(Friends)/\$15(SPU)

Duration: 1hr 15mins

PRESENTED WITH ASSISTANCE FROM THE TURKISH MINISTRY OF CULTURE

PRESENTED BY



SUPPORTED BY



# Scriabin

Ecstasy, mysticism, sensuality and exoticism combine in the unique musical language of Russian composer Alexander Scriabin (1872-1915), one of the truly visionary creators of late-romantic European music.

Scriabin was obsessed with the connection between life, the universe and spiritual transformation. His massive orchestral works are scored for huge instrumental and choral resources. We present four of his largest and most important masterpieces: PROMETHEUS, SYMPHONY NO 3 (The Divine Poem), PIANO CONCERTO IN F # and the POEM OF ECSTASY as well as a selection of Scriabin's piano sonatas performed by dazzling young Israeli pianist Jonathan Shin'ar.

Join the Adelaide Symphony Orchestra and the Australian Youth Orchestra, conductors David Porcellijn and Gilbert Varga, and soloists Geoffrey Douglas Madge and Jonathan Shin'ar in an unprecedented explosion of musical rapture!

**“SCRIABIN CANNOT HAVE DISCIPLES. SCRIABIN MUST STAND ALONE - HE IS A SOLITARY GENIUS.”**

SERGE PROKOFIEV

**THEBARTON THEATRE**  
March 7 at 8pm

Adelaide Symphony Orchestra  
*Scriabin: Prometheus (with solo piano & chorus)*  
*Messiaen: L'Ascension*  
*Gubaidulina: Alleluja (with boy soprano & chorus)* Australian Premiere  
Conductor: David Porcellijn  
Soloist: Geoffrey Douglas Madge

Duration: 2hrs (incl. two intervals)

**FESTIVAL THEATRE**  
March 13 at 8pm

Adelaide Symphony Orchestra  
*Hartmann: Symphony No. 6*  
*Xenakis: Synaphai (1st Piano Concerto)* Australian Premiere  
*Scriabin: Symphony No. 3, "The Divine Poem"*  
Conductor: David Porcellijn  
Soloists: Geoffrey Douglas Madge

Duration: 1hr 50mins

**ADELAIDE TOWN HALL**  
March 5 at 8pm

Australian Youth Orchestra  
*Messiaen: Les Oiseaux Exotiques*  
*Scriabin: Piano Concerto in F#, Op.20*  
*Scriabin: Poem of Ecstasy*  
Conductor: Gilbert Varga  
Soloist: Jonathan Shin'ar

Duration: 1hr 30mins

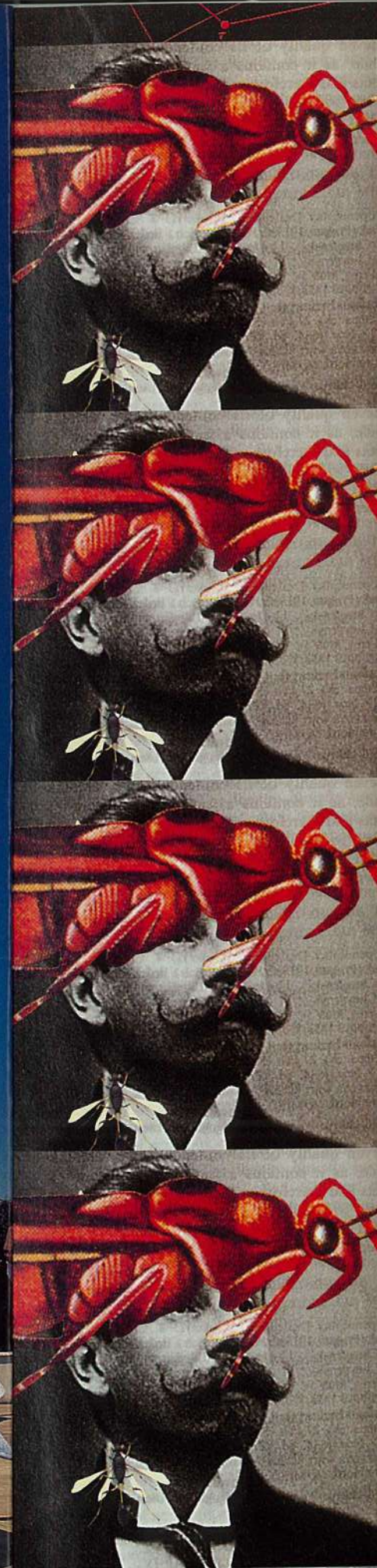
A Res \$45/\$38(Friends)/\$28(SPU)  
B Res \$38/\$33(Friends)/\$23(SPU)

**ELDER HALL**  
March 12 at 5.45pm

*Scriabin: Sonata No.1 in F minor, Op.6*  
*Sonata No. 3 in F# minor, Op.23*  
*Sonata No 4 in F# major, Op. 30*  
*Sonata No 5, Op.5*  
*Sonata No 9, Op.68*  
Pianist: Jonathan Shin'ar

Duration: 1hr 30mins

\$25/\$21(Friends)/\$18(SPU)



# jordi savall

JORDI SAVALL, the most celebrated viola da gambist in the world and musicians from HESPERION XX and LA CAPELLA REIAL CATALUNYA make their long-awaited Australian debut. His sound track for "Tous le matins du Monde", a film on French composer Marin Marais, starring Gérard Depardieu, brought SAVALL international recognition and sold over half a million copies worldwide.

For the Telstra Adelaide Festival 96, singer Montserrat Figueras and members of his two ensembles will perform an intoxicating concert of 17th century Spanish and Italian music. SAVALL will also present his only solo recital in Australia during the 1996 Festival in the inspiring surroundings of St Peter's Cathedral.

**"I RARELY DISCUSS PERFECTION IN MUSIC. I HAVE NO QUALMS ABOUT THIS WITH MEMBERS OF HESPERION XX, THIS IS THE EMBODIMENT OF MUSICAL PERFECTION."**

THE BOSTON GLOBE

LA CAPELLA REIAL CATALUNYA  
HESPERION XX  
JORDI SAVALL, DIRECTOR  
ADELAIDE TOWN HALL  
March 3 at 5pm

Featuring music by Monteverdi, Luys de Milan, Juan del Ensina and Pedro Guerrero

A Res \$50/\$42(Friends)/\$38(SPU)  
B Res \$42/\$36(Friends)/\$30(SPU)

Duration: 1hr 45mins

(MUSICA VIVA SUBSCRIPTION CONCERT, MARCH 2)

JORDI SAVALL SOLO,  
ST PETERS CATHEDRAL  
March 9 at 8pm

Featuring solo music for the viola da gamba

A Res \$50/\$42(Friends)/\$38(SPU)

A limited number of seats are available with restricted vision of the performance

B Res \$42/\$36(Friends)/\$30(SPU)

Duration: 1hr 45mins

PRESENTED BY ARRANGEMENT WITH  
MUSICA VIVA AUSTRALIA



SPONSORED BY  
Enjoy being healthy  
Foundation SA



# kronos

They're back! Appearing in Australia only at the Adelaide Festival, the supercharged KRONOS QUARTET is one of today's hottest names in classical music. The group shatters the illusions of conventional chamber music with an extensive 20th century repertoire, ranging from Shostakovich and Berg to the innovations of Philip Glass, Jimi Hendrix, Thelonious Monk and John Cage.

Through a fearless and virtuosic dedication for experimentation, KRONOS QUARTET has established a striking mode of interpretation unmatched by its peers.

Among the highlights of their concerts will be their musical version of Allen Ginsberg's famous poem "Howl" and Tan Dun's extraordinary "Ghost Opera": both these works will be exclusive Australian premieres.

KRONOS QUARTET is David Harrington and John Sherba (violins), Hank Dutt (viola) and Joan Jeanrenaud (cello)

**"THEY DRESS LIKE ROCK STARS, AND THEY PLAY SONGS BY JIMI HENDRIX AND JAMES BROWN. THE KRONOS QUARTET IS SHAKING UP CLASSICAL MUSIC THE SAME WAY THE BEATLES SHOOK UP POP".**

ROLLING STONE

THEBARTON THEATRE  
March 2 at 8pm  
*Franghiz Ali-Zadeh: Mugam Sayagi*  
*Lee Hyla: Howl*  
(with the voice of Allen Ginsberg)  
*Tan Dun: Ghost Opera*  
(with special guest, Wu Man)  
\$40/\$34(Friends)/\$26(SPU)

Duration: 2 hrs

ELDER HALL  
March 4 at 5.45pm  
*Julia Wolfe: Dig Deep*  
*Harry Partch (arr. Ben Johnston): Two Studies on Ancient Greek Scales*  
1. *Olympos' Pentatonic*  
2. *Archytas' Enharmonic*  
*Mario Lavista: Musica Para Mi Vecino (Music for my Neighbour)*  
*P.Q. Phan: Children's Games*  
*Tragedy at the Opera*  
*Ken Benshoof: Song of Twenty Shadows*  
*John Adams: Four Selections from John's Book of Alleged Dances*  
\$25/\$21(Friends)/\$15(SPU)

Duration: 1hr 20 mins

# ozopera

## The Magic Flute at the Queen's Theatre

1791

Premiere of THE MAGIC FLUTE in Vienna

1841

Opening of the Queen's Theatre in Australia

1956

Launch of the Australian Opera in Adelaide

1996

First performance by OZOPERA, the Australian Opera's new national touring company in the shell of the Queen's Theatre (Australia's oldest mainland theatre) 12 singers and 12 instrumentalists will perform a new version of Mozart's glorious opera. Some of the most exciting voices in the country will mingle with the ghosts of Australian theatre history to provide an evening of unforgettable operatic magic.

QUEEN'S THEATRE  
March 4,6,8,9,11,12,13 at 8.00pm

\$50/\$42(Friends)/\$38 (SPU)  
Opening night Saturday March 2 at 8.00pm  
\$75/\$65 Friends (incl. complimentary refreshments)

Duration: 3hrs

Please note: Strictly limited seating  
(380 seats per performance)

PROUDLY PRESENTED BY

Santos



THE AUSTRALIAN OPERA ACKNOWLEDGES FINANCIAL SUPPORT FOR THIS PRODUCTION PROVIDED BY THE COMMONWEALTH GOVERNMENT THROUGH THE DEPARTMENT OF COMMUNICATION AND THE ARTS

ozopera  
THE AUSTRALIAN OPERA



Ever been in a cafe filled with people,  
but not felt crowded?

Looked through a wine list and become  
intoxicated by the selection alone?

Tasted new and exciting flavours  
in a restaurant with an atmosphere  
as delectable as the food itself?

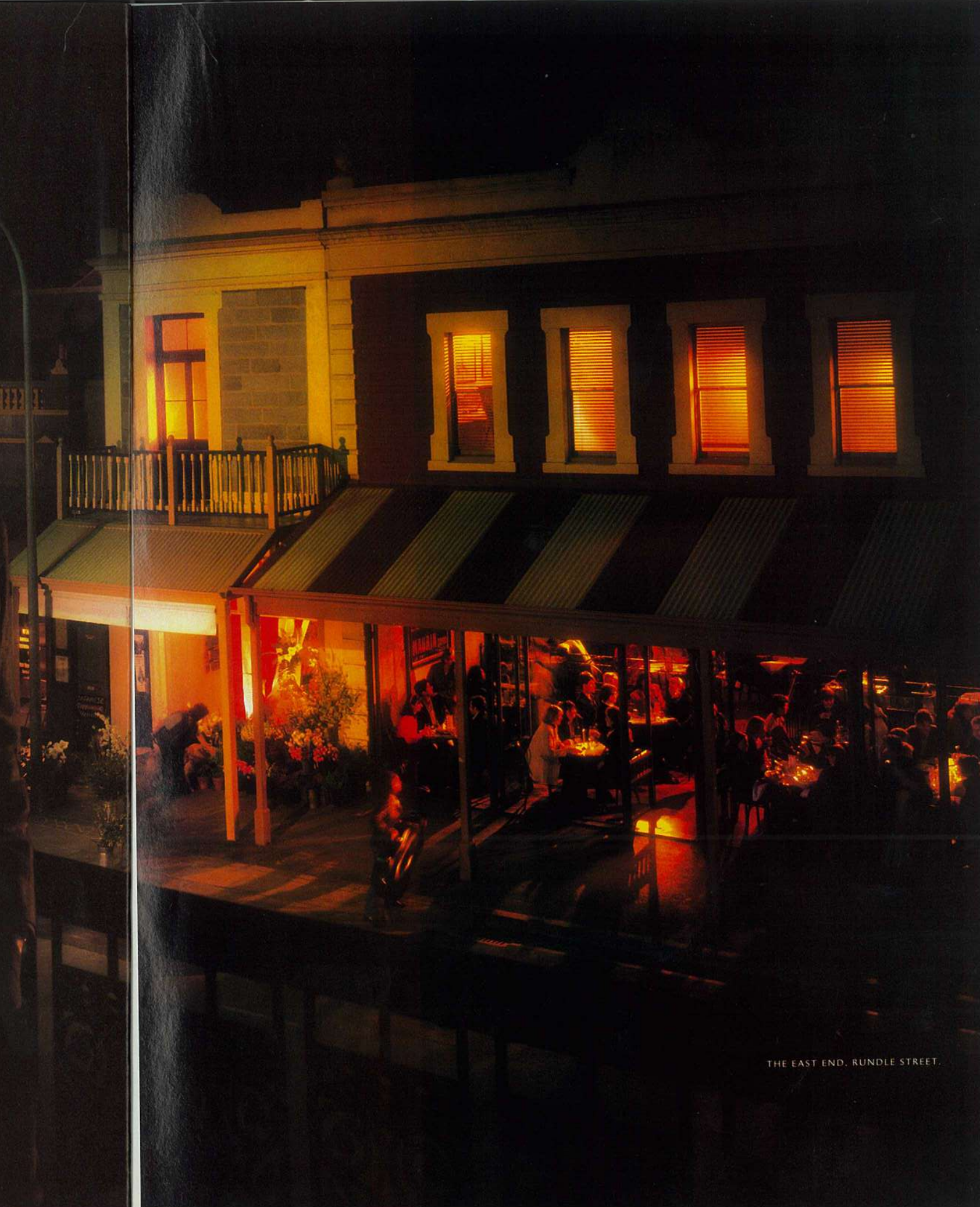
Heard the sounds of the past  
in buildings lovingly  
preserved for the future?

Been touched by an evening  
of theatre you'll remember  
for years to come?

To see and hear more of what  
Adelaide has to offer, call  
the South Australian Travel Centre  
toll free on 1800 805 153.



Come to your senses.  
Come to Sensational Adelaide.



THE EAST END, RUNDLE STREET.

In an exclusive Adelaide-only season, Lloyd Newson and his UK based company DV8 PHYSICAL THEATRE return to Australia with their latest electrifying production, ENTER ACHILLES.

The European observed "if hanging out in a bar discussing football strikes you as an unpromising starting point for any work of art, ENTER ACHILLES shall make you think again". When a glass of beer is smashed on stage, defence barriers are smashed with it and what began as a friendly get-together gradually becomes a violent, confronting and cruel journey into the labyrinth of male rituals. Humour, ugliness and astounding physical virtuosity combine to make ENTER ACHILLES a remarkable piece of dance theatre about sexuality, emotion and male psychology.

Australian born Lloyd Newson established DV8 PHYSICAL THEATRE in 1986 and with his production of "Dead Dreams of Monochrome Men" (1989), "Strange Fish" (1992) and "MSM" (1993) has established himself as one of the most important and exciting choreographers in Europe. Using a highly physical language, DV8 explodes the boundaries of contemporary dance. ENTER ACHILLES will leave you disturbed, amused, confronted and breathless.

# dv8 physical theatre

**"THE MOST INNOVATIVE DANCE COMPANY IN THE COUNTRY, DV8 CREATE A PHYSICAL THEATRE THAT IS AS SHOCKING AS IT IS DARING"**

ELLE MAGAZINE

**"THE APPEAL OF DV8 IS ITS COMBINATION OF PHYSICAL DARING, COMEDY MOVEMENT AND STRIKING THEATRICALITY, BUT ITS DEEPER VALUE LIES IN THE WAY THESE ELEMENTS ARE USED TO REPRESENT HUMAN FEELING AND EXPERIENCE"**

DAILY TELEGRAPH, LONDON

**"FOR COURAGE AND MASTERY, DV8 IS UNMATCHED"**

THE INDEPENDENT ON SUNDAY, LONDON

## PLAYHOUSE

March 12, 13, 14, 15, 16 at 8pm  
March 17 at 2pm

A Res \$50/\$42(Friends)/\$36(SPU)  
B Res \$42/\$36(Friends)/\$30(SPU)

Duration: 1hr 15mins (no interval)

Latecomers cannot be admitted.

ENTER ACHILLES IS CO-PRODUCED BY WIENER FESTWOCHEEN AND THE ROYAL FESTIVAL HALL WITH DANCE UMBRELLA, WITH A CONTRIBUTION FROM BAYERISCHE STAATSOOPER/LABOR; BAYERISCHES STAATSSCHAUSPIEL/MARSTALL.

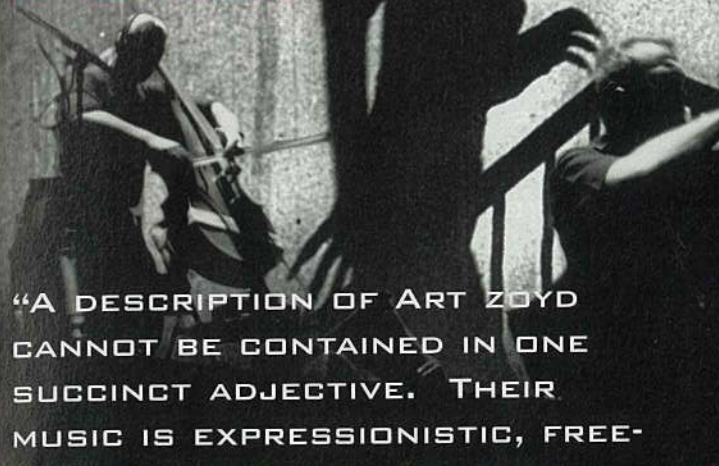
PRESENTED BY



RATED (R)

THIS PRODUCTION CONTAINS LANGUAGE AND SCENES WHICH SOME AUDIENCE MEMBERS MAY FIND OFFENSIVE - SUITABLE FOR ADULTS ONLY

# art zoyd



**"A DESCRIPTION OF ART ZOYD CANNOT BE CONTAINED IN ONE SUCCINCT ADJECTIVE. THEIR MUSIC IS EXPRESSIONISTIC, FREE-FORM, JAZZ-PUNK, ART-ROCK, GOTHIC CHAMBER MUSIC."**

NEW YORK POST

ART ZOYD is a four piece rock group that perform live to masterpieces from the silent film era. For the Adelaide Festival they will perform the music for two of the most famous silent films ever made: NOSFERATU and FAUST. Both these films were directed by F.W. Murnau, whom Charlie Chaplin hailed as the man who carried the art of silent movies to perfection.

NOSFERATU is a masterpiece of spine-chilling German Expressionist cinema. Based on the original story of Dracula, NOSFERATU contains images and scenes that have influenced decades of film-makers and will remain in your memory forever!

FAUST is based on Goethe's epic play about an ageing philosopher who sells his soul to the devil in return for youth, money and power. Murnau's version is a poetic, visual fantasia. A rarely screened cinematic masterpiece!

ART ZOYD is a quartet but its instrumental arsenal yields a sound with an orchestral heft: synthesizers, samplers, tape machines, keyboards, percussion, amplified string instruments and saxophone all accompany huge, cinematic images of enormous power and beauty. Rock Music meets the Horror Film!

## NOSFERATU, THEBARTON THEATRE

March 2 at 2pm  
March 3 at 8.30pm

Duration: 1hr 10 min (no interval)

## FAUSTUS, THEBARTON THEATRE

March 3 at 3pm

Duration: 1hr 20 min (no interval)

\$30/\$26(Friends)/\$20(SPU)

NOSFERATU IS A COPRODUCTION OF ART ZOYD - VILLE DE MAUBEUGE  
FAUST WAS COMMISSIONED BY ROMA "MUSICA DELLE OMBRE" FESTIVAL.  
ART ZOYD IS FUNDED BY CONSEIL REGIONAL NORD - PAS DE CALAIS, CONSEIL GENERAL DU NORD AND VILLE DE MAUBEUGE

PRESENTED BY



SUPPORTED BY



# pierre henry & son/ré

For the first time in Australia, the Telstra Adelaide Festival 96 is proud to present PIERRE HENRY, one of the most innovative sound composers in the world. Born in Paris in 1927, Henry was a student of Olivier Messiaen and Nadia Boulanger and went on to found the "musique concrète" movement with Pierre Schaeffer. He has composed numerous radio works, ballet scores (mostly for Maurice Béjart) and electro-acoustic scores.

In Adelaide, PIERRE HENRY will surround the entire auditorium of Her Majesty's Theatre with loudspeakers and electronic equipment and will perform live music for two of the most influential silent films ever made: THE MAN WITH A CAMERA (1929) by Russian director Dziga Vertov and BERLIN:SYMPHONY OF A CITY (1927) by German director Walther Ruttmann. Vertov's film is a gritty, surreal vision of a city seen through a movie camera. Ruttmann's film traces a day in the life of metropolitan Berlin through images of intense poetic beauty. Both films will be accompanied live by PIERRE HENRY in a stunning demonstration of his concept of "visual music".

**"SHATTERING ... YOU LISTEN TO A BUZZING, ENTIRELY INVENTED WORLD, WHICH HEIGHTENS PERCEPTION"**

LIBERATION, PARIS

## THE MAN WITH A CAMERA

March 6 at 6pm  
March 7 at 8pm

Duration: 1hr 20mins (no interval)

LA VILLE / DIE STADT. METROPOLIS PARIS-BERLIN  
by Walther Ruttmann / Pierre Henry (based on the film Berlin: Symphony of a City)

March 9 at 8pm  
March 10 at 6pm

Duration: 1hr 10mins (no interval)

## HER MAJESTY'S THEATRE

A Res \$30/\$26(Friends)/\$21(SPU)  
B Res \$26/\$22(Friends)/\$18(SPU)

PRESENTED WITH ASSISTANCE FROM ASSOCIATION FRANÇAISE D'ACTION ARTISTIQUE AND PERMISSION FROM WESTDEUTSCHER RUENDFUNK KÖLN AND STUDIO AKUSTISCHE KUNST.

# image aiguë

"IF YOU HAD TO COMPARE HER WORK YOU WOULD SAY THAT CHRISTIANE VÉRICEL IS THE PINA BAUSCH OF CHILDREN."

LE FIGARO, PARIS

From town to town, in France and abroad, the IMAGE AIGUË company leads an unparalleled path in the theatrical world, where music, choreography and text combine to form neither a theatre for children nor a theatre for adults but a theatre for both played by actors belonging to different generations. The company has performed throughout Europe, at the Brooklyn Academy of Music in New York and will appear at the 1996 Atlanta Olympic Cultural Festival.

Christiane Véricel and her company of child and adult actors will come to Adelaide and work with nine South Australian children who have travelled to Lyon to work with the company in the development of NITS, a tale of desire and jealousy, survival and robbery, seduction and war.

"SHE FINDS THE STRONGEST, THE MOST BEAUTIFUL IMAGES, THE MOST CONCENTRATED EXPRESSION, TO EXPRESS THE VULNERABILITY, THE ABSURDITY OF POWER, ITS CONFLICTS WITH THE VITAL NECESSITIES OF SURVIVAL AND DEVELOPMENT"

LE PROGRÈS

## PREVIEWS ROYALTY THEATRE

February 28, 29 at 8pm  
February 29 at 2pm

\$15/\$13(Friends)/\$11(SPU)

ROYALTY THEATRE  
March 2,3,6,7,8 at 8pm  
March 3 at 2pm  
March 9,10 at 5pm

A Res \$30/\$26(Friends)/\$21(SPU)  
\$75 Family Ticket (2 + 2)  
\$15 extra child

B Res \$26/\$22(Friends)/\$18 (SPU)  
\$65 Family ticket (2 + 2)  
\$12 extra child

Duration: 65 min (no interval)

PRESENTED WITH THE ASSISTANCE OF THE ASSOCIATION FRANÇAISE  
D'ACTION ARTISTIQUE AND THE SOUTH AUSTRALIAN YOUTH ARTS BOARD

PRESENTED BY  
**Faulding.**

SUPPORTED BY  
 Adelaide

ASSISTED BY  
 SAYAB

# the black sequin dress

Commissioned by the Adelaide Festival, THE BLACK SEQUIN DRESS is the latest work from one of Australia's truly original theatre artists - Jenny Kemp. Playwright and director, Kemp defies most expectations of dramatic productions and her work combines personal feeling with vivid and confronting imagery. Her production of *Call of the Wild* was described by James Waites as "an imaginative flight, which soars way above what most of us are used to in Australian theatre".

THE BLACK SEQUIN DRESS begins as a woman in a black sequin dress leaves the children for the evening and goes to a nightclub. In a moment of indecision she glances back, slips and falls. We watch as memory, desire, dream, fantasy and myth serve to animate the descent into the underworld and her subsequent ascent. This new production, which derives inspiration from the painting of surrealist artist Paul Delvaux, is about the extraordinary resonances of ordinary action. Lyrical, confronting and important new Australian theatre.

THE BLACK SEQUIN DRESS is written and directed by Jenny Kemp, composed by Elizabeth Drake and designed by Jacqueline Everett.

PREVIEWS - SCOTT THEATRE  
March 2,3 at 6pm

\$15/\$13(Friends)/\$10(SPU)

SCOTT THEATRE  
March 5,6,7,8,9,10 at 8pm  
March 9 at 2pm

A Res \$30/\$26(Friends)/\$21(SPU)  
B Res \$26/\$22(Friends)/\$17(SPU)

Duration: 1hr 30 mins (no interval)

A CO-PRODUCTION WITH PLAYBOX THEATRE CENTRE OF MONASH  
UNIVERSITY

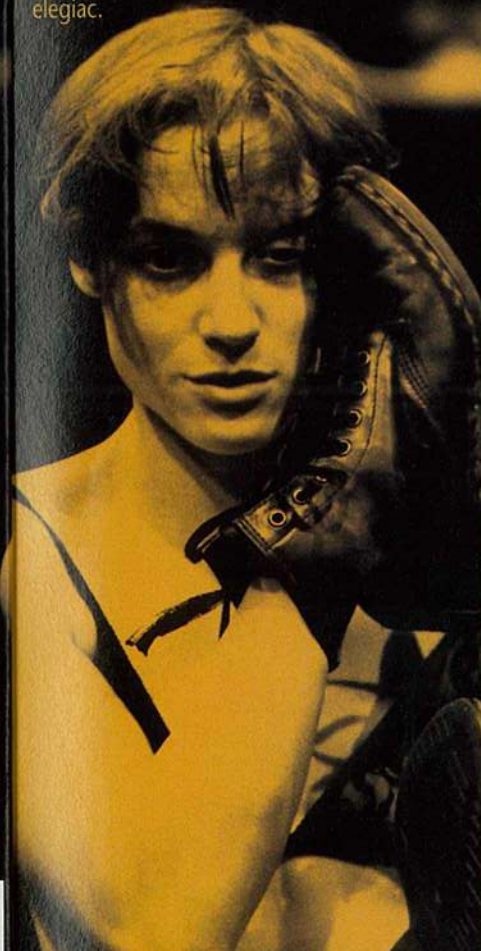
ASSISTED BY THE COMMONWEALTH GOVERNMENT  
THROUGH THE AUSTRALIA COUNCIL, ITS ARTS  
FUNDING AND ADVISORY BODY AND  
PLAYING AUSTRALIA



# meg stuart/ damaged goods

Meg Stuart is a dancer and choreographer, born in New Orleans and now based in Brussels. Her work has been hailed for its startling originality and unforgettable emotional impact. Through fragmented and dislocated movement, music and light, the work of Stuart and her dance company is based on precise observation of the smallest gestures.

In Australia for the first time and appearing only at the Adelaide Festival, MEG STUART/DAMAGED GOODS will be presenting two full-length works: NO LONGER READYMADE (described by the New York Times as "a work of extraordinary power" and hailed by critics and audiences as one of the most important new dance productions to be seen in the last five years), and her latest work, NO-ONE IS WATCHING, which received its world premiere in August, 1995. MEG STUART/DAMAGED GOODS is dance theatre for the *fin-de-siècle*: harrowing, beautiful and elegiac.



"TO LIVE IN NEW YORK MEANS TO LIVE IN THE MIDDLE OF PARADOXES AND OPPOSITIONS, IT MEANS TO EXPERIENCE THE HIDDEN BODY OF A PURITAN AMERICA AND THE REVERSE OF THE TINSEL MIRROR OF THE BIG CITIES. LIVING IN THIS CONTEXT, MEG STUART'S DANCE SHOWS THE PARADOXICAL ASSOCIATION OF POWER AND FRAGILITY IN TODAY'S METROPOLITAN LIFE, THROUGH THE MOST IMMEDIATE INSTRUMENT: THE HUMAN BODY".

ANDRÉ LEPECKI

NO LONGER READY MADE  
THE SPACE  
March 1 at 8.30pm  
March 2, 3 at 6pm

\$30/\$26(Friends)/\$20(SPU)

Duration: 1hr 10mins (no interval)

NO-ONE IS WATCHING  
THE SPACE  
March 6,7,9,10 at 8.30pm

\$30/\$26(Friends)/\$20(SPU)

Duration: 1hr 30mins (no interval)

PRESENTED WITH ASSISTANCE FROM THE FLEMISH MINISTRY OF CULTURE

SPONSORED BY  
Enjoy being healthy  
Foundation SA

# inje

INJE is a new production by Melbourne-based company HILDEGARD. It is being produced in collaboration with Vaskressia Viharova, one of Bulgaria's most daring and innovative directors and head of the new Bulgarian University's Theatre Department in Sofia.

INJE is based on a famous Bulgarian short story by Jordan Yovkov, which tells the folk tragedy of Inje, brutal warrior and bandit, and his transformation into hero and protector of the people.

Language, song, dance movement and rhythm are all used as elements to create a highly charged and dynamic world, a world of grief, exultation and humour. INJE is an important work by one of Australia's most exciting new theatre companies.

"INTENSE FUSION OF SONG, DANCE AND FOLK RITUAL ... IN A WAY THAT TRANSCENDS TIME, SPACE AND PLACE ... DISTINCTIVE AND SEDUCTIVE, FULL OF EMOTION AND EXPECTATION"

THE AGE, MELBOURNE

PREVIEW  
ODEON THEATRE  
March 1 at 6pm

\$20/\$17(Friends)/\$14(SPU)

ODEON THEATRE  
March 2,8 at 6pm  
March 3 at 5pm  
March 6 at 1pm  
March 5,6,7 at 8.30pm  
March 9 at 2pm

\$30/\$26(Friends)/\$21(SPU)

Duration: 1hr 5mins

PRESENTED IN ASSOCIATION WITH PERFORMING LINES AND WITH ASSISTANCE FROM THE OPEN SOCIETY (SOROS FOUNDATION) BULGARIA, THE AUSTRALIA COUNCIL, ARTS VICTORIA AND THE NEW BULGARIAN



# the ethereal eye - a meditation on the architecture of Walter and Marion Burley Griffin.

A dazzling music and dance meditation on the ideas and architectural scapes of Walter and Marion Burley Griffin devised by Jonathan Mills and Nanette Hassall.

Winners of the international competition to design Canberra, Walter and Marion Burley Griffin were the controversial American architects who came to Australia in 1912.

The venture was charged with excitement. A chance to give physical form to the capital of a new nation. A design inspired by the celestial cities of ancient civilisations, Canberra was to be a symbol of hope, a utopian vision.

What went wrong? Frustrated idealism, bureaucratic obstruction, parochial jealousy, even a Royal Commission, prevented the Griffins from realising their intentions.

THE ETHEREAL EYE is a collaboration between choreographer Nanette Hassall, composer Jonathan Mills, stage designer Mary Moore, sound designer Stephen Adam and lighting designer Margie Medlin. It features soprano Jane Edwards, Synergy Percussion and Leigh Warren and Dancers.

Specifically mounted for the Telstra Adelaide Festival 96, THE ETHEREAL EYE draws on the individual talents of these exceptional Australian artists to evoke through music and dance a city that was never built, architectural dreams which remain unfulfilled.

**NORWOOD CONCERT HALL**  
March 9,10,13-16 at 8.30pm

\$30/\$26(Friends)/\$21(SPU)

Duration: 50 min (no interval)

THIS PROJECT HAS BEEN ASSISTED BY THE COMMONWEALTH GOVERNMENT THROUGH THE AUSTRALIA COUNCIL, ITS ARTS FUNDING AND ADVISORY BODY

PRESENTED BY ASSISTED BY



# solstice

by **Matt Rubinstein**  
Starring  
**Kate Ceberano**

Across the landscape of Adelaide, from the quarry to the sea, flow the lives of its people and on the longest day of the year, the summer solstice, a story of young love unfolds in a midsummer night's jazz dream of poetry, music and multi-media performance.

Adapted by Matt Rubinstein from his evocative and eloquent novel written entirely in verse, SOLSTICE is twenty-four hours of love and lives lost and found.

This unique journey into the heart and soul of the city features Kate Ceberano and some of Australia's finest jazz musicians. The production, directed by Neill Gladwin, designed by Michael Scott-Mitchell and with lighting by Krystof Kozlowski, is presented outdoors in the Amphitheatre, Elder Park.

**PREVIEWS**  
**BANKSA AMPHITHEATRE, ELDER PARK**  
March 4, 5 at 8.30pm

\$25/\$20(Friends/SPU)

Duration: 1hr 30 mins (no interval)

**BANKSA AMPHITHEATRE, ELDER PARK**  
March 6-10,12-17 at 8.30pm

\$30/\$20(Friends/SPU)

Duration: 1hr 30 mins (no interval)

PRESENTED BY STATE THEATRE COMPANY OF SOUTH AUSTRALIA IN ASSOCIATION WITH MAGPIE THEATRE

LLOYD



# betontanc

BETONTANC (Concrete Dance) is a group of bold young artists from Slovenia, part of the former Yugoslavia. Based in Ljubljana, the company confronts personal issues of power, control and violence with intense, high-risk movement theatre. Combining Balkan roots, Slavic melancholy and Mediterranean temperament, they are at the vanguard of a new Slovenian theatre crossing Europe. BETONTANC performers refer to themselves not as dancers or actors, but as "a basketball team".

BETONTANC will bring to the Adelaide Festival two visceral and powerful productions.

EVERY WORD A GOLD COIN'S WORTH: six daring young actors thrash, bash and crash against one another and a large, metal wall. The mood of corporeal violence - both explicitly sexual and free-floating - is never dispelled. This is both distressing and deeply exhilarating theatre.

"KNOW YOUR ENEMY!" takes place on the other side of the metal wall. The utopia is revealed as just another form of oppression. To the haunting strains of a string quartet, the actors of BETONTANC embark on an investigation of power, sexuality and love.

"EXTRAORDINARY ...  
YOUNG, FRESH, SMART  
AND ORIGINAL, FULL OF  
FAST, PRECISE, DARING  
ATHLETICISM"

THE GLASGOW HERALD

**EVERY WORD A GOLD COIN'S WORTH**  
**SCOTT THEATRE**

March 12 at 8pm

March 13 at 6pm and 9pm

\$35/\$30(Friends)/\$25(SPU)

Duration: 1hr (no interval)

"KNOW YOUR ENEMY!"

**SCOTT THEATRE**

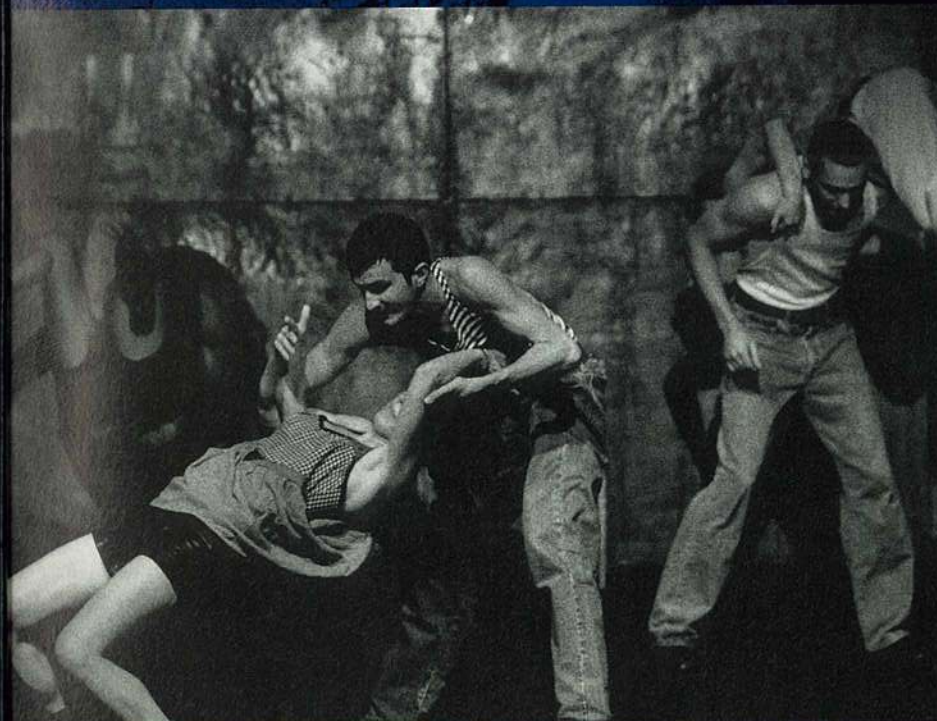
March 15, 16 at 8pm

March 17 at 5pm

\$35/\$30(Friends)/\$25(SPU)

Duration: 1hr (no interval)

PRESENTED WITH THE ASSISTANCE OF THE MINISTRY OF CULTURE,  
REPUBLIC OF SLOVENIA



# krapp's last tape

Samuel Beckett's overwhelming mono-drama is one of the truly seminal works of modern theatre. The demanding solo role of Krapp will be played by acclaimed Polish actor Wenanty Nosul, directed by Lech Mackiewicz. KRAPP'S LAST TAPE is one of the most openly autobiographical works that Beckett conceived. On a stage occupied by a table, a tape-recorder and some bananas, Krapp meditates on the absurdity, anguish and experience of life in language that is unforgettably poignant.

**PRICE THEATRE**  
March 9,10,11,13,14,16 at 8.30pm  
March 11, 13 at 1pm  
March 15 at 6pm

\$35/\$30(Friends)/\$25(SPU)

Duration: Approx. 1hr 15mins (no interval)

Performed in English

ASSISTED BY



RENOWNED RUSSIAN DIRECTOR, LEV DODIN AND HIS TROUPE OF OVER TWENTY-FIVE YOUNG AND EXTRAORDINARY ACTORS BRING THEIR TWO MOST INTERNATIONALLY ACCLAIMED PRODUCTIONS TO ADELAIDE: GAUDEAMUS AND CLAUSTROPHOBIA

"THERE ARE MANY THEATRE COMPANIES IN THE WORLD CAPABLE OF CARRYING OFF BRILLIANT PERFORMANCES. BUT IT'S THE RARE GROUP THAT CAN ACTUALLY MAKE YOU BELIEVE THAT LIFE - EVEN OF THE WILDEST, MOST PHANTASMAGORICAL - IS BEING LIVED ONSTAGE.

THE MALY DRAMA THEATRE OF ST PETERSBURG DOES JUST THAT, WRAPPING THE AUDIENCE NOT IN REALISM, BUT IN THE EXTREMITIES OF HUMAN TRAGEDY, JOY AND ABSURDITY, IN A WAY THAT IS SO MAGICAL, SO INTENSE AND SO RHAPSODIC THAT YOU FORGET WHERE YOU ARE."

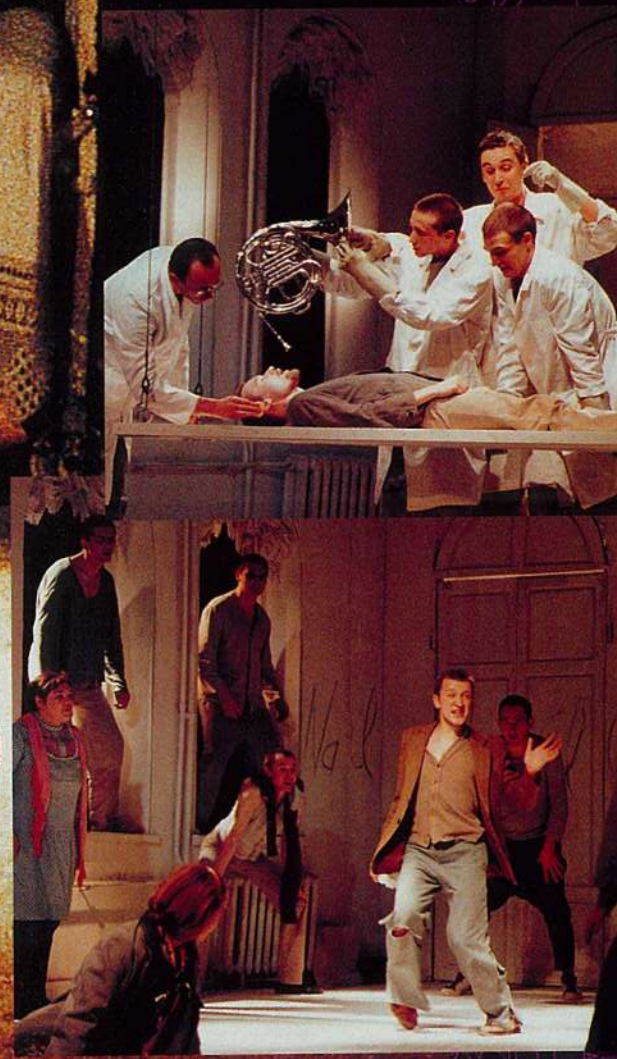
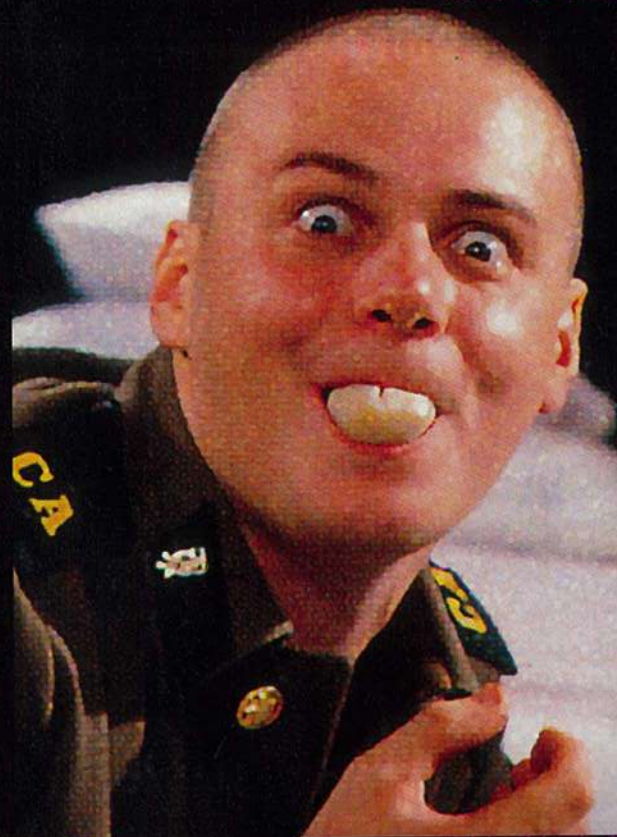
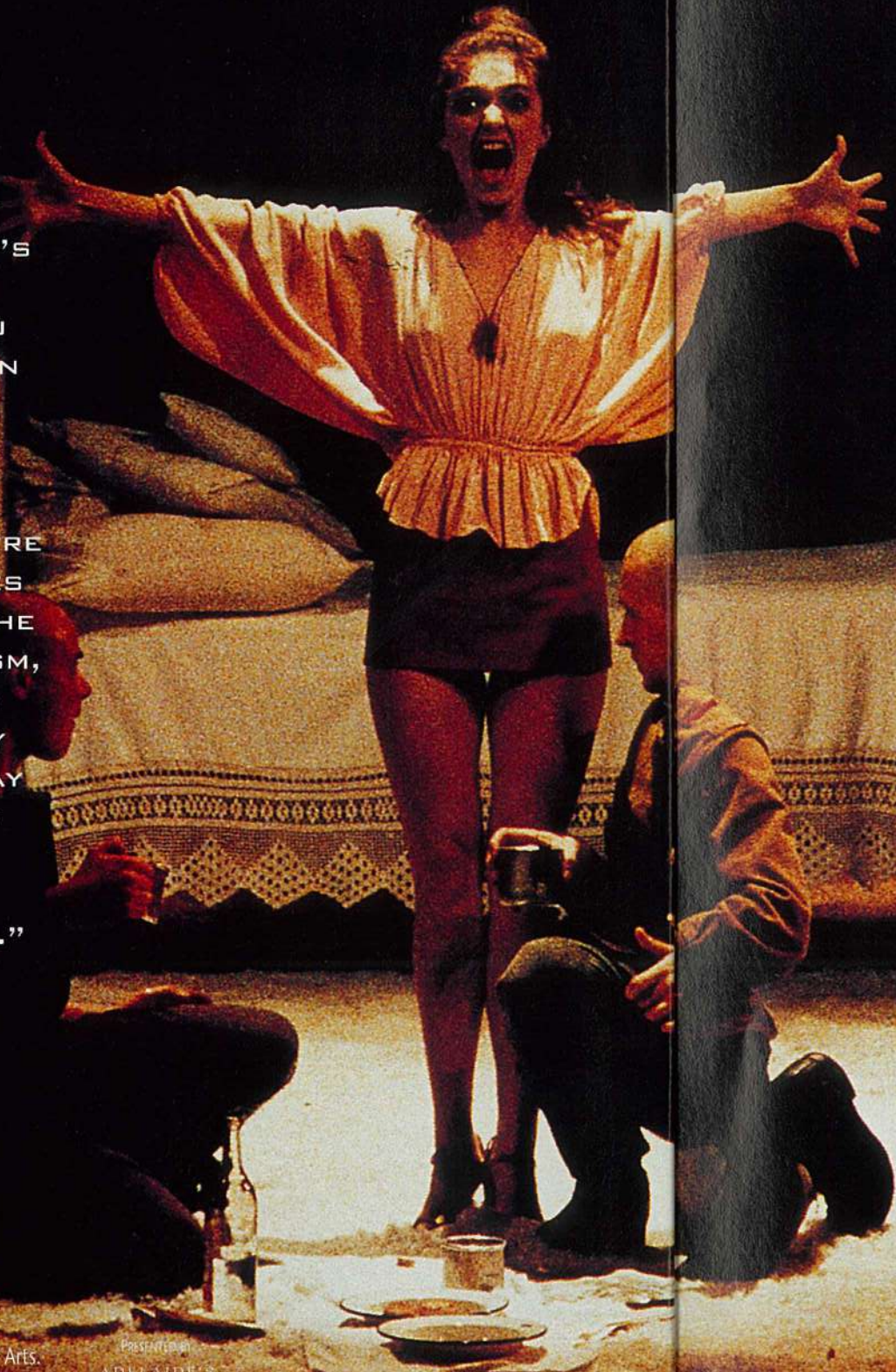
CHICAGO SUN-TIMES

"THEATRE LIKE YOU'VE NEVER SEEN BEFORE."

LIBERATION, PARIS

Director: Lev Dodin  
Set Design: Alexeis Porai-Kochits  
Performed by young actors of the Maly Drama Theatre and Students of the Academy of Theatre Arts.

Both productions are performed in Russian with English surtitles.



# gaudeamus

WILD. HYSTERICAL. EXHILARATING.

An astonishing parade of vaudeville, enchantment and violence. Inspired by Sergi Kaledin's controversial 1988 novel "Construction Battalion" (the only book banned by the Gorbachev Government). A devastating fictional account of young Russian rebels during the last years of the Soviet military.

Using the music of Tchaikovsky, the Beatles, Brel and Mozart, GAUDEAMUS is a theatrical cavern of miracles where the actors speak with their bodies and with their souls.

PLAYHOUSE  
March 1, 2, 5 at 8pm  
March 2 at 2pm  
March 3 at 5pm

A Res \$50/\$42(Friends)/\$38(SPU)

B Res \$42/\$36(Friends)/\$30(SPU)

Duration: 2hrs 15mins

SUPPORTED BY



# claustrophobia

CLAUSTROPHOBIA:  
A ROOM OUT OF TIME.

A room of yesterday and tomorrow. A room that looks abandoned but is populated with phantoms and memories. A magical room where brass bands fly in through windows. Where hilarious ballet classes erupt into frenzied chaos. The room of the young Russian psyche, where the bodies of former Soviet leaders are examined by young doctors wielding trombones and tubas. CLAUSTROPHOBIA is a complex room of new hopes, new phobias and new discoveries.

FESTIVAL THEATRE  
March 7, 8, 9 at 8pm

A Res \$50/\$42(Friends)/\$38(SPU)

B Res \$42/\$36(Friends)/\$30(SPU)

C Res \$30/\$25(Friends)/\$20(SPU)

Duration: 2hrs

SUPPORTED BY

The Advertiser

# tito puente latin jazz ensemble

# arturo sandoval

# Giora Feidman Trio

# annie sprinkle post porn modernist

# malcolm mclaren

# sandra bernhard



The recent arrival of celebrated Cuban trumpet player ARTURO SANDOVAL has been joyfully applauded throughout the jazz and classical music communities. A protégé of legendary jazz master Dizzy Gillespie, SANDOVAL was a founding member of the Grammy-winning group Irakere. In 1981 he left Irakere to form his own band, which garnered enthusiastic praise from critics and audiences all over Europe and Latin America. SANDOVAL was voted Cuba's best instrumentalist in 1982, 1983 and 1984. With this ensemble of 8 musicians, SANDOVAL has evolved into one of the world's most acknowledged guardians of jazz trumpet and flugelhorn, as well as a renowned classical artist. Two unmissable concerts of dazzling jazz virtuosity!



What Louis Armstrong was for Basin Street blues and Ravi Shankar is for Indian ragas, GIORA FEIDMAN has become for the mystical melodies of Jewish music. From New York's Carnegie Hall to London's Royal Albert Hall he performs to standing ovations from capacity audiences humming, swaying, hand-clapping and finger-snapping to their infectious beat. Proclaimed the undisputed King of Klezmer ("instrument of song"), FEIDMAN and his Trio play Jewish music, Joplin rags, Gershwin's songs and Argentinean tangos with an irresistible blend of art and showmanship. To attend a FEIDMAN performance is an extraordinary, unforgettable and deeply moving experience.

How did a nice girl from Granada Hills grow up to be a prostitute, porn star and controversial performance artist? Ask Annie Sprinkle, the New York-based artist and see for yourself in her one-woman show POST PORN MODERNIST. On a set representing the boudoir of a porn queen, she rehashes her life - from middle class West Coast Jewish girl Ellen Steinberg, through sexual performance artist Annie Sprinkle, to her currently evolving self as Anya, a sexual mystic. POST PORN MODERNIST is a highly engaging, unexpectedly funny performance from one of America's most provocative, banned and talked-about artists.

Twenty years ago MALCOLM McLAREN launched Sex Pistols and Anarchy in the UK and in doing so changed the look and sound of pop music and fashion forever. Here at long last, McLaren presents LIVING YESTERDAY TOMORROW, his own "How to ....." guide for cultural subversion.

LIVING YESTERDAY TOMORROW is a guided tour through the glittering gutter life of music, fashion, film, advertising and art. In this solo presentation, Malcolm takes a behind the scenes look at his work and the Pistols, Vivienne Westwood, Stephen Spielberg, William Gibson, Madonna and Catherine Deneuve as well as his internationally successful solo music projects (Buffalo Gals, Fans, Waltz Darling, Paris), further spicing the mix with an entertaining array of original ideas, gossip and scintillating McLarenisms.

LIVING YESTERDAY TOMORROW is Malcolm McLaren at his illuminating best - a cyberlecture no-one with an interest in music, media, technology, fashion and film should miss.

HER MAJESTY'S THEATRE  
March 3 at 8.30pm

A Res \$40/\$34(Friends)/\$28(SPU)  
B Res \$34/\$28(Friends)/\$22(SPU)

Duration: 1hr 30mins (no interval)

PRESENTED IN ASSOCIATION WITH THE ADELAIDE FESTIVAL CENTRE TRUST AND MANIFEST PRODUCTIONS

Fierce. Tender. Confrontational. Vulnerable. And hilarious. That's Sandra Bernhard. With her mix of boldness, honesty and vulnerability, she has turned pop culture on its side. Whether it be through her performances, recordings, books or acting roles on film and TV (including Martin Scorsese's "King of Comedy" and guest appearances on "Roseanne"), SANDRA BERNHARD continues to involve as an anti-icon for whom free expression - artistically, spiritually and sexually - is everything. Infamous comedienne, cabaret performer, actress and author, SANDRA BERNHARD simply cannot be ignored.

"IN DREDGING UP HER OWN ADOLESCENT DREAMINESS AND SCRUTINIZING IT WITH SUCH AN INTENSE MIXTURE OF RAPTURE AND SCORN, BERNHARD PROVES BOTH SATIRIST AND SHAMAN, EXPOSING THE NARCISSISM OF ROCK CULTURE AND ACTING AS A LIGHTNING ROD FOR HER AUDIENCE'S COLLECTIVE FANTASIES OF BOTH HER AND THE STARS SHE DISCUSSES. IT IS A BRILLIANT, RISKY PERFORMANCE THAT BRINGS COMEDY AND MUSIC TOGETHER IN AN ALTOGETHER NEW WAY"

THE NEW YORK TIMES

FESTIVAL THEATRE  
March 5 at 8pm

\$43/\$40(Friends/SPU)

PRESENTED BY ADRIAN BOHM

What can you say that hasn't been said about TITO PUENTE? The real "Mambo King", the monarch, the master percussionist, Puente's name has become synonymous with such greats as Leonard Bernstein, George Gershwin, Cole Porter, Count Basie and Duke Ellington. With over 100 recordings to his name, 4 Grammy Awards, numerous film credits (including "The Mambo King" and Woody Allen's "Radio Days") and a Star on the famous Hollywood Walk of Fame, PUENTE has been electrifying audiences for more than 50 years. For two explosive evenings, TITO PUENTE and his 14 piece LATIN JAZZ ENSEMBLE will leave you breathless, sweaty and delirious.

"ERUPTIONS OF SOUND THAT ACCENTUATE AND POWER HIS ROARING BANDS .... HIS PLAYING HAS THE ABILITY TO MAKE PEOPLE FEEL BETTER .... ONE OF THE MOST EXCITING ACTS WORKING IN AMERICAN MUSIC"

THE NEW YORK TIMES

THEBARTON THEATRE  
March 4,5 at 8.30pm

\$35/\$30(Friends)/\$25(SPU)

Duration: 1hr 30mins (no interval)



"CATCH HIM NOW, AT THE GLORIOUS STAGE IN HIS CAREER WHEN, FOR PHYSICAL CHOPS AND QUICK-THINKING INVENTION HE CAN BLOW ANY OTHER TRUMPETER IN THE WORLD RIGHT OFF THE BANDSTAND"

LONDON STANDARD

THEBARTON THEATRE  
March 8,9 at 8.30pm

\$35/\$30(Friends)/\$25(SPU)

Duration: 1hr 30 min (no interval)

SUPPORTED BY

The Advertiser

"SUCH CLARINET PIANISSIMO CANNOT BE FOUND ANYWHERE ELSE ON EARTH. GIORA FEIDMAN IS A TOTAL ART FORM IN HIMSELF, FOR WHICH THERE IS NO EQUAL"

FRANKFURTER ALLGEMEINE ZEITUNG

ELDER HALL  
March 2 at 5.45pm

\$25/\$21(Friends)/\$15(SPU)

Duration: 1hr 15mins (approx)

ELDER HALL  
March 3 at 8pm

\$35/\$30(Friends)/\$25(SPU)

Duration: 2hrs (approx)

PRESENTED BY ARRANGEMENT WITH NEXUS ARTS

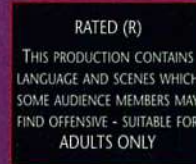
"FASTEN YOUR SEATBELTS: YOU'RE IN FOR A BUMPY RIDE THROUGH THE MINEFIELDS OF YOUR OWN SEXUAL PREJUDICES"

SAN FRANCISCO WEEKLY

ROYALTY THEATRE  
March 12,13,14,16 at 8.30pm  
March 17 at 6pm

A Res \$28/\$24(Friends)/\$20(SPU)  
B Res \$24/\$20(Friends)/\$15(SPU)

Duration: 2hrs 15mins



PRESENTED IN ASSOCIATION WITH BACKROW PRODUCTIONS



SPONSORED BY  
Enjoy being healthy  
Foundation SA

# bang on a can allstars

From Manhattan's Lower East Side comes one of the most vital, brash and energetic contemporary music groups in America.

BANG ON A CAN ALLSTARS are Maya Beiser (cello), Robert Black (bass), Lisa Moore (piano), Steven Schick (percussion), Mark Stewart (electric guitar) and Evan Ziporyn (woodwinds) - six virtuoso musicians who play music that breaks new ground and defies categories. They have performed at the Lincoln Centre, the Tanglewood Festival and the South Bank Centre in London.

BANG ON A CAN ALLSTARS will be making their only Australian appearances at the Telstra Adelaide Festival 96 for a series of five concerts performed in different venues around Adelaide.

Join these wonderful musicians in a staggering journey of contemporary music that will leave you breathless, invigorated and screaming for more!

**"BANG ON A CAN ... HAS QUICKLY ESTABLISHED ITSELF AS BOTH A SHOWCASE FOR AN ARRAY OF AVANT-GARDE STYLES AND A LIVELY BURST OF CONTEMPORARY FIREWORKS."**

## INTRODUCING BANG ON A CAN

Out of the rot and decay of New York's Lower East Side, Bang on a Can charged up the American new music scene with its bold and irreverent programs. For the first BANG ON A CAN ALLSTARS concert in Australia ever music by four young daredevils rubs shoulders with works by Brazilian jazz legend Hermeto Pascoal and the visionary Frederic Rzewski.

### QUEEN'S THEATRE

March 7 at 8.30pm

\$25/\$21(Friends)/\$17(SPU)

Duration: 1hr (no interval)

## AMBIENT BANG

Forget what you know about Ambient. BANG ON A CAN turns the style on its head with Canadian Michael Maguire's overwhelming concerto piano and noise. Then sit back for the Allstars' own shocking version of Philip Glass's transcendental Two Pages.

### PLAYHOUSE

March 9 at 5.45pm

\$25/\$21(Friends)/\$17(SPU)

Duration: 1hr 10mins (no interval)

## VIRTUOSITY

There's a lot more to virtuosity than wiggling your fingers. An entire Georgian choir distilled into a single clarinet, a piece so hard it intends the performer to fail, and the relentless drive of overpowering grooves - a wild concert of impossible musical challenges.

### ADELAIDE TOWN HALL

March 11 at 8.30pm

A Res \$30/\$26(Friends)/\$21(SPU)

B Res \$26/\$22(Friends)/\$18(SPU)

Duration: 1hr 40mins

## LOUIS ANDRIESEN - HOUT

Louis Andriessen blew up the European scene with his manifestos about time and the state. Out of the rubble come premieres by three Andriessen inspired toughs from Australia, England and the Czech Republic.

### ELDER HALL

March 12 at 1pm

\$18/\$15(Friends)/\$12(SPU)

Duration: approx 1hr (no interval)

## DOWNTOWN EXPLOSION

Five scruffy, homemade, noisy, eclectic, uncompromisingly funky raw and intense composers from the New York downtown scene ask the hard questions about where music has been and where it is going. Plus Steve Reich. Check it out.

### THEBARTON THEATRE

March 15 at 8.30pm

\$30/\$26(Friends)/\$21(SPU)

Duration: 1hr 30mins

SUPPORTED BY



# façade firm

From the Japanese city of Hachinohe comes the astonishing theatre company MOLECULAR THEATRE.

Shigeyuki Toshima is a practising psychiatrist whose studies on schizophrenia and hysteria have resulted in theatrical productions of bizarre and magical power.

FAÇADE FIRM is based on S.I. Witkiewicz's "Regulations of Portrait Painting Firm - 1932". Witkiewicz was a pioneer of Polish avant-garde theatre. Besides being a photographer, portrait painter, novelist, philosopher and dramatist, he was a collector of faces: he photographed and painted many hundreds of faces, amassing an enormous collection of human expressions. FAÇADE FIRM is the creation of a new theatrical language. Activating sense, imagination and the subconscious, the production reveals on the stage an invisible world hidden behind appearance. Seeing a performance by MOLECULAR THEATRE is like entering a surreal labyrinth populated by objects, people, fragmented language, ominous red windows and funnel-faced insects. FAÇADE FIRM takes exactly seventy-seven minutes to perform.

**"WE CAN NEVER REALLY SEE OUR OWN FACES. OF COURSE, THEY CAN BE SEEN AS REFLECTED IMAGES IN MIRRORS OR PHOTOGRAPHS; IT IS POSSIBLE TO GAIN SOME IDEA OF ONE'S LOOKS THROUGH THE FACIAL EXPRESSIONS OF OTHERS NEVERTHELESS IT IS IMPOSSIBLE TO SEE ONE'S OWN FACE"**

TOSHIMA SHIGEYUKI, DIRECTOR

### THE SPACE

March 12,13,15,17 at 6pm

March 12,13,15 at 9.30pm

March 16 at 2pm & 8pm

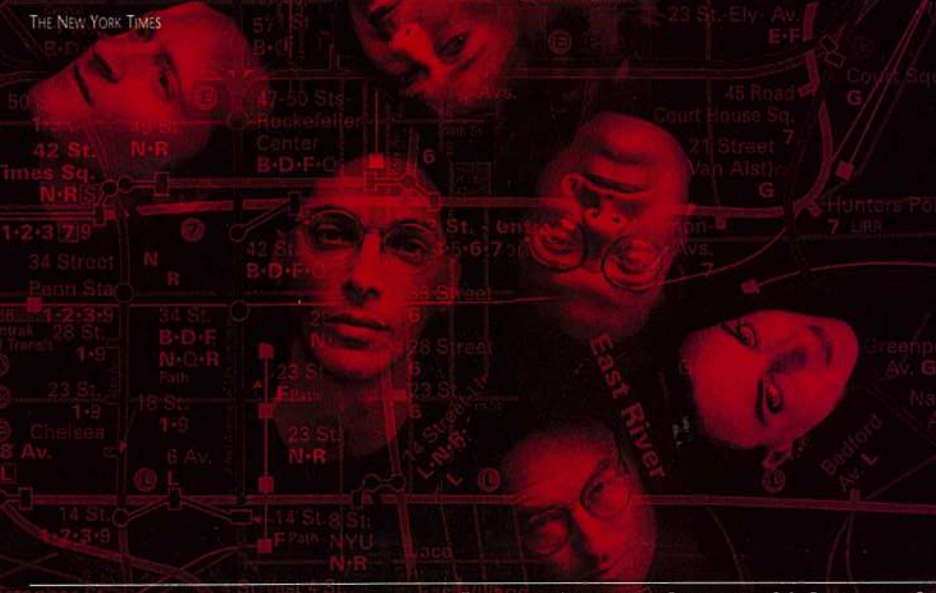
\$35/\$30(Friends)/\$25(SPU)

Duration: 77mins (no interval)

PRESENTED WITH ASSISTANCE FROM THE JAPAN FOUNDATION



THE NEW YORK TIMES

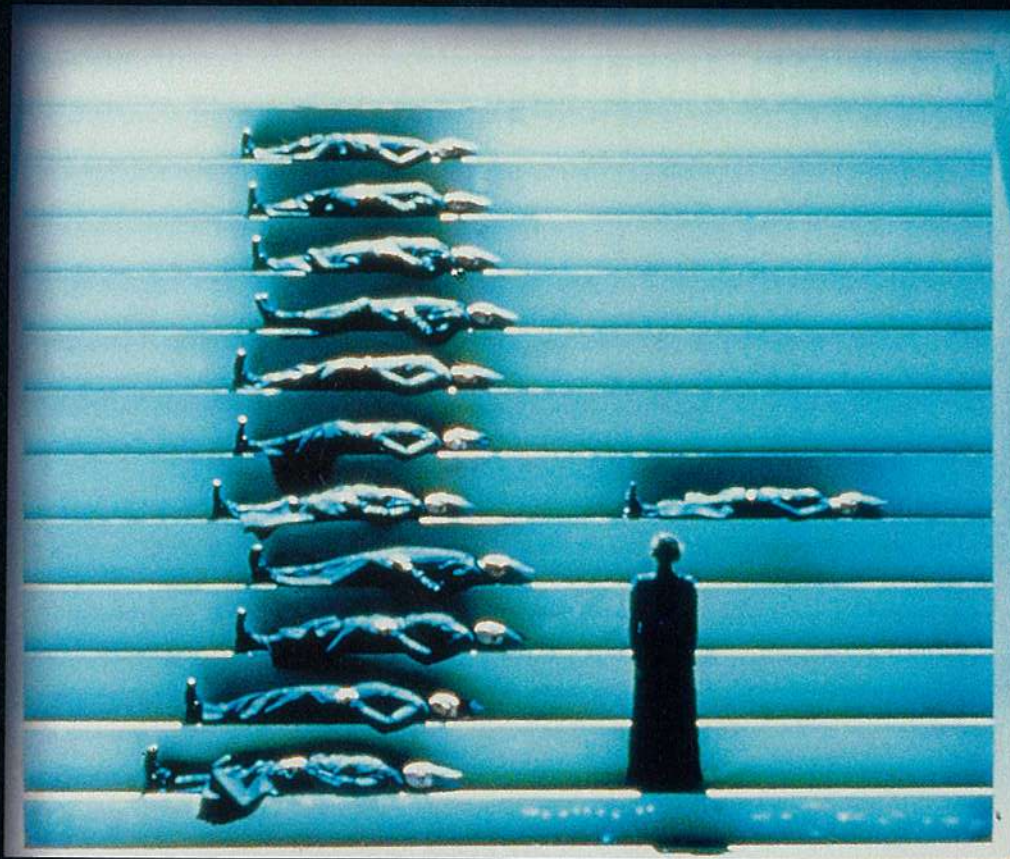


SPONSORED BY

Enjoy being healthy  
Foundation SA



# operation:orfeo



OPERATION:ORFEO is a stunning piece of visual music theatre from the Danish company HOTEL PRO FORMA. The timeless myth of Orpheus and his descent into Hades to rescue his dead wife Eurydice is used as the foundation for a modern concept of opera created by architecture, sound and light. A huge staircase stretching into the infinite and framed by a proscenium construction serves as the set for this production which is performed by the Ars Nova Choir. OPERATION:ORFEO is spellbinding to the ears and ravishing to the eyes - an abstract painting that sings and moves with staggering beauty.

Copenhagen based HOTEL PRO FORMA, founded in 1985, work in the sphere where visual art, architecture and theatre are connected with elements of language, music and movement. They frequently collaborate with the Japanese performance company Dumb Type, whose performances were one of the highlights of the 1994 Adelaide Festival.

**"OPEN YOUR EYES AND UNFOLD YOUR EARS. THE HOTEL PRO FORMA PERFORMANCE OPERATION:ORFEO IS BOTH THE MOST EPOCH MAKING AND SIMPLY THE MOST BEAUTIFUL MUSIC THEATRE THE ROYAL THEATRE HAS HOSTED IN YEARS"**

BERLINGSKE TIDENDE, COPENHAGEN

Concept, direction: Kirsten Tomas Dehlholm  
 Scenography: Maja Ravn  
 Light Design: Jesper Kongshaug  
 Costume: Annette Meyer  
 Libretto: Ib Michael  
 Music: Bo Holten, Gluck and John Cage

**FESTIVAL THEATRE**  
 March 12,14 at 8pm

A Res \$50/\$42(Friends)/\$35(SPU)  
 B Res \$42/\$36(Friends)/\$25(SPU)  
 C Res \$30/\$25(Friends)/\$20(SPU)

**FESTIVAL THEATRE**  
 March 15,16 at 8pm

A Res \$60/\$52(Friends)/\$48(SPU)  
 B Res \$52/\$46(Friends)/\$40(SPU)  
 C Res \$35/\$30(Friends)/\$25(SPU)

Duration: 1hr 25 mins

PRESENTED WITH ASSISTANCE FROM THE DANISH MINISTRY FOR CULTURE

SPONSORED BY  
 Enjoy being healthy  
 Foundation SA



# station 2: eye of another

Tim Maddock and Cath McKinnon join with sound artist Tony Kastanos and visual artist Craige Andrae to create a new poetics of theatre which seeks to illuminate aspects of multiplicity in contemporary Australian culture rather than obscure them in a singular myth. STATION 2: EYE OF ANOTHER takes as its narrative premise a lawless act (the murder of a taxi driver by a young woman) and how this act is perceived by three different characters. Adelaide based RED SHED THEATRE COMPANY, acclaimed for their productions of "Frankenstein's Children" and "Dog Eat Dog", will once again present their work in a non-traditional performance space, developing their performance style that integrates the spoken word with the language of technologies.

**PREVIEW**  
**VENUE TO BE ADVISED**  
 March 2 at 9pm

**VENUE TO BE ADVISED**  
 March 4,5,6,7,8,9 at 9pm  
 March 6, 8 at 11pm

\$22/\$19(Friends)/\$15(SPU)

Duration: 70 mins

PRESENTED BY RED SHED THEATRE COMPANY



# red sun - red earth

Twenty young Australians and Japanese performers storm the Amphitheatre with sound and spectacle in John Romeril's new work - RED SUN - RED EARTH. Directed by Hisao Takase, from the Bungaku-Za in Tokyo, and developed and performed by students from the Drama Centre, Flinders University in Adelaide and the young artists from Japan, cultural exchange is alive on stage!

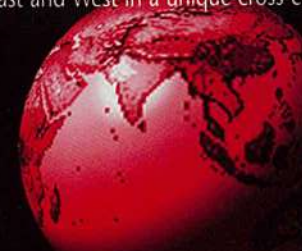
First performed in Nago City, Okinawa, Japan in February 1996 RED SUN - RED EARTH explores movement theatre, vocal chorus, visual imagery and the sounds of East and West in a unique cross-cultural collaboration.

**BANK SA AMPHITHEATRE,**  
**ELDER PARK**  
 March 14,15,16,17 at 6pm

Admission Free

Duration: 50mins

OKINAWA 96 IS SUPPORTED BY THE FLINDERS UNIVERSITY OF SOUTH AUSTRALIA; THE SIDNEY MYER FUND, THE HELPMANN ACADEMY OF SOUTH AUSTRALIA, THE OKINAWA INTERNATIONAL FESTIVAL OF THEATRE FOR YOUNG AUDIENCES; NAGO CITY, JAPAN; AND THE JAPAN FOUNDATION.



# the blue hour

THE BLUE HOUR is Part 1 of "Far from Where", a cycle of performances on the Australian experience by Renato Cuocolo.

The Melbourne based IRAA Theatre is at the forefront of a new Australian theatre based on passionate movement, daring physicality and a bold exploration of text and performance.

THE BLUE HOUR is a chronicle of inner life which issues from memory - a theatre of memory where time has shrunk and where past, present and future co-exist. THE BLUE HOUR tells of the vanishing of a fullness of sense in human history and the consequent impossibility of narration.

**"ARE YOU GOING DOWN THERE?  
 HOW FAR YOU WILL BE!" "FAR FROM  
 WHERE?"**

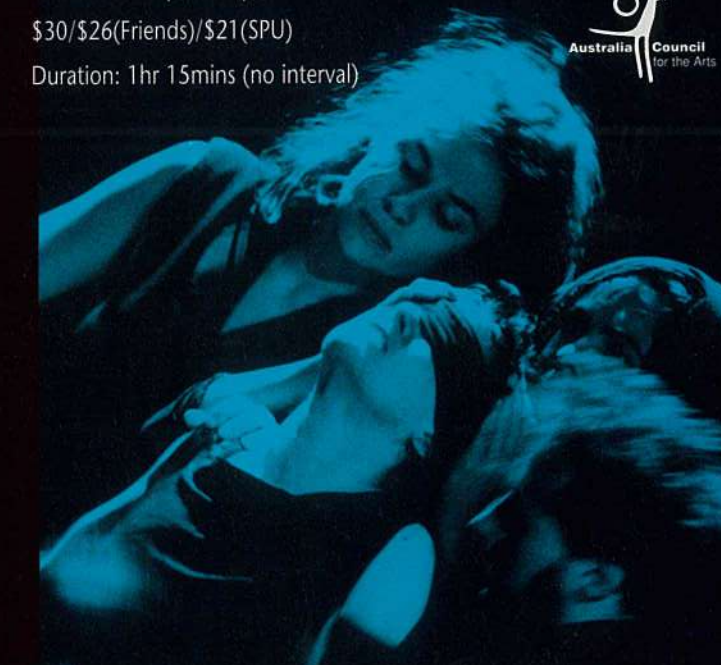
**"AN EXTRAORDINARY COMPANY"**

THE AGE, MELBOURNE

**ODEON THEATRE**  
 March 13,14,15 at 8pm  
 March 16 at 5pm & 9pm

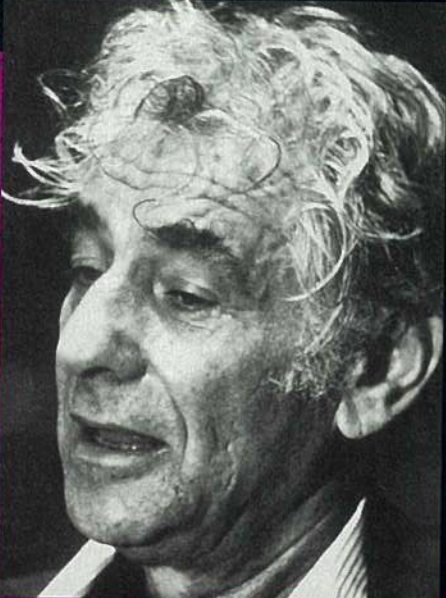
\$30/\$26(Friends)/\$21(SPU)

Duration: 1hr 15mins (no interval)





Set in a seedy basement cafe near 135th Street and Lennox Avenue, BLUE MONDAY is the story of a triangular love affair in which jealousy turns to murder. This explosive Telstra Adelaide Festival 96 Australian premiere will star Christine Douglas, Dominic Natoli, Douglas McNicol, David Lemke, Grant Doyle and Gregory Roberts.



**TROUBLE IN TAHITI**, set in post-war baby-boom US suburbia, explores the darker side of 1950s bliss, where every home has a successful working man, an adoring wife and every new-fangled labour-saving gadget. **TROUBLE IN TAHITI** has its roots in musical comedy and the American musical theatre and through a wonderful blending of operatic convention and upbeat jazz songs, Bernstein presents a scathing, witty satire on suburban consumerism. **TROUBLE IN TAHITI** stars Kirsty Harms, David Lemke, Wendy Hopkins, Grant Doyle and Brian Gilbertson.

**ADELAIDE TOWN HALL**  
March 15 at 8pm  
March 17 at 2.30pm

Performance in English  
Res: \$48/\$40(Friends)/\$38(SPU)  
Res: \$38/\$30(Friends)/\$30(SPU)  
Duration: 1 hr 35 mins

THE PERFORMANCES OF BLUE MONDAY ARE PRESENTED BY ARRANGEMENT WITH BOOSEY AND HAWKES (AUSTRALIA) PTY LTD AND TROUBLE IN TAHITI BY ARRANGEMENT WITH WARNER/CAMPBELL MUSIC INC.

PRESENTED BY

## the amsterdam baroque orchestra

One of the finest of the existing period ensembles, the AMSTERDAM BAROQUE ORCHESTRA is one of the world's most prolific performing and recording ensembles and has presented most of the masterpieces from the baroque repertoire. The Orchestra's recording schedule for the next decade includes the production of all the Bach Cantatas on sixty-five CDs.

Founder and Artistic Director, Ton Koopman, conducts from the harpsichord two programs of master works from the baroque period played on authentic period instruments.

**ADELAIDE TOWN HALL**  
March 6 at 8pm

*Hellendaal: Concerto Grosso in g minor*  
*Bach: Brandenburg Concerto No.3*  
*Rameau: Suite from "Les Indes Galantes"*  
*Mozart: Symphony No.29 in A*

**ADELAIDE TOWN HALL**  
March 7 at 8pm

*Telemann: Overture for 3 oboes, strings & continuo in G minor*  
*Bach: Brandenburg Concerto No.1*  
*Handel: Suite No.1 from "Water Music" in F, HWV 348*

A Res \$50/\$42(Friends)/\$36(SPU)  
B Res \$42/\$36(Friends)/\$30(SPU)

Duration: 2hrs (approx.)

PRESENTED BY ARRANGEMENT



## olaf baer

OLAF BAER is considered to be one of the foremost lieder interpreters of his generation. Renowned for his richly coloured tone and his ability to vary phrasing, dynamics and timbre to match the inner movement of music and words, BAER is a master lieder singer. For the Adelaide Festival, OLAF BAER and associate artist, David Harper, will present two superb recitals including song cycles by ROBERT SCHUMANN and selected works by HUGO WOLF. These programs embrace some of the most heart wrenching and remarkable music composed for the human voice.

**"BAER CAN CAROL LIKE AN ANGEL AND SNARL LIKE A SERGEANT MAJOR ..... HIS LISTENERS ARE ABSORBED AND CARRIED AWAY, OUT OF THEIR EVERYDAY CONSIDERATIONS AND INTO A DIFFERENT REALITY"**

THE AUSTRALIAN

**ADELAIDE TOWN HALL**  
March 14 at 8pm

*Schumann: Dichterliebe Op.48*  
*Wolf: Lieder nach Texten von Joseph von Eichendorff*  
*Aus dem "Buch Salaiika" des "Westostlichen Divans" von Johann Wolfgang von Goethe*  
*Lieder des Haten*

Duration: 2 hours

**ADELAIDE TOWN HALL**  
March 16 at 8pm

*Schumann: Liederkreis Op.39*  
*Wolf: Lieder nach Texten von Eduard Morike*

Duration: 2 hours

A Res \$45/\$38(Friends)/\$28(SPU)

SUPPORTED BY

SAHM

## grimm tales



**"AN ABSOLUTELY BRILLIANT SHOW ..... I AND MY BLOOD-THIRSTY FOUR-YEAR-OLD SON WERE RIVETED TO OUR BENCH SEAT"**

THE DAILY TELEGRAPH, LONDON

English poet Carol Ann Duffy's adaptation of a collection of Grimm's Fairy Tales for the Young Vic Theatre in London has caused a sensation in England. Duffy and the theatre's artistic director Tim Supple have created an evening of unbridled imagination, horror and entertainment. Hansel and Gretel, Bluebeard's Castle, Cinderella and many other famous characters whirl across the stage in a delightful and magical mix of music, dance and image. GRIMM TALES is a show for the whole family.

"They used their hands to be birds and came and pecked the eyeballs out and there was red string coming out of the eyes, but they were pretend eyeballs - not real. I caught the food the actors threw at the end - but it wasn't real either" - Oliver, Aged 4, The Sunday Times, London

**HER MAJESTY'S THEATRE**  
March 12,13,14,15,16 at 6.30pm  
March 14 at 1pm  
March 16,17 at 2pm

A Res \$30/\$26(Friends)/\$21(SPU)/\$75(Family 2+2)  
B Res \$26/\$22(Friends)/\$18(SPU)/\$65(Family 2+2)

Duration: 2hrs 10mins

PRESENTED BY ARRANGEMENT WITH THE NEW ZEALAND INTERNATIONAL FESTIVAL AND WITH ASSISTANCE FROM THE BRITISH COUNCIL

## excavation the last days of mankind

EXCAVATION is a spectacular music-theatre event involving over forty student performers from the Centre for Performing Arts. Director Michael Kantor and designer Dan Potra (responsible for the highly praised premiere production of *The Burrow* at the 1994 Festival of Perth) will create a "scorched earth" on which bodies and images from the ruins of the 20th century are led in an absurd theatrical procession by the fallen angels Shemhazai and Azael.

Drawing upon fragments from Karl Kraus' monumental and rarely performed epic "The Last Days of Mankind", EXCAVATION explores the sermon of history and links technology with propaganda and the mutilated body with biblical judgement, fire, embers and ash.

**A PITCH BLACK COMEDY OF EPIC PROPORTIONS.**

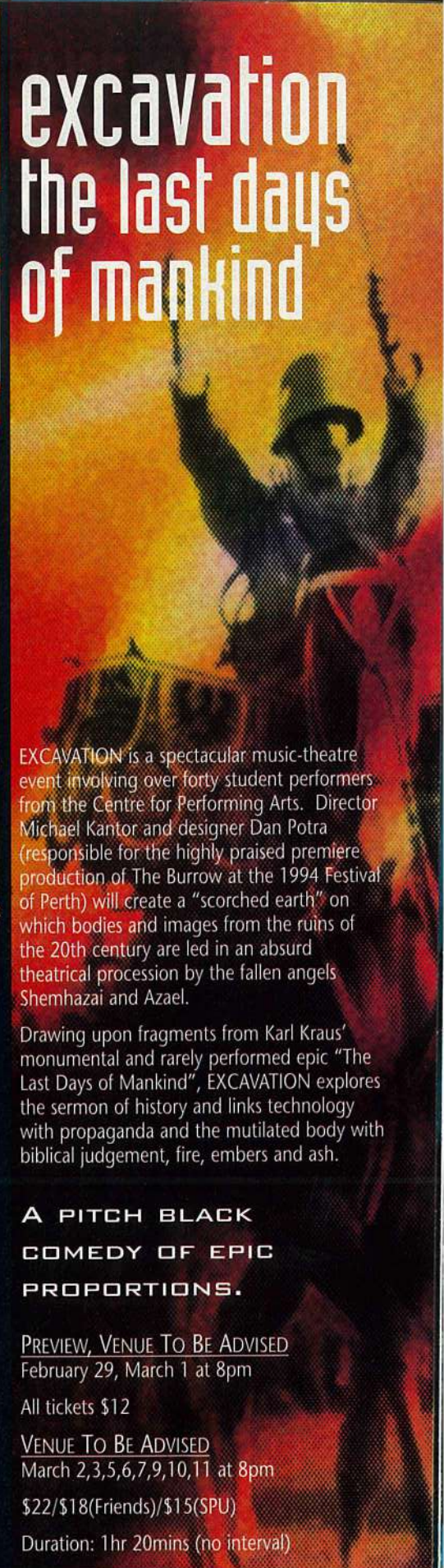
**PREVIEW, VENUE TO BE ADVISED**  
February 29, March 1 at 8pm

All tickets \$12

**VENUE TO BE ADVISED**  
March 2,3,5,6,7,9,10,11 at 8pm

\$22/\$18(Friends)/\$15(SPU)

Duration: 1hr 20mins (no interval)





## What do Adelaide & Edinburgh have in common?

The answer to this question is two of the world's most diverse Arts Festivals!

Telstra Adelaide Festival '96 and the The Australian magazine are giving a trip for two to both of these outstanding Festivals for what will be a truly world wide Arts experience!

### THE PRIZE

The winner and a guest will fly to the Telstra Adelaide Festival '96 with Ansett Australia Business Class. You will spend three nights at the exclusive Adelaide Hilton International Hotel. As guests of the Telstra Adelaide Festival '96 you will receive tickets to three Festival events of your choice.

After experiencing the best artistic talent from around the world in Adelaide, you will set your sights for the Edinburgh International Festival 1996 in Scotland!

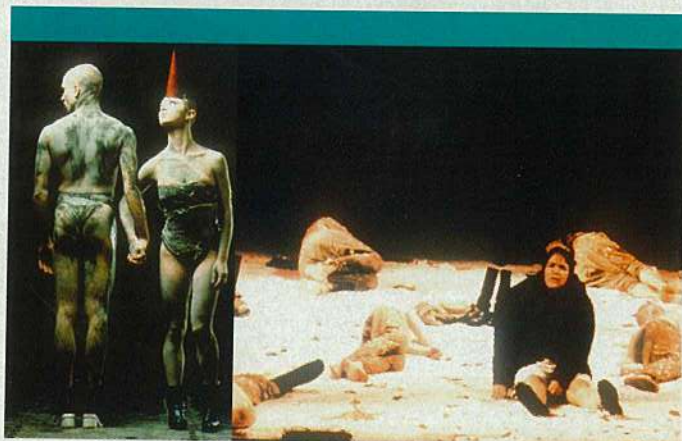
Flying Malaysian Airlines "Golden Club", you will touch down in London. We have arranged five nights at the Hilton, giving you time to explore this fascinating city. Then it's on to a further five nights in Edinburgh, to attend the Edinburgh International Festival with tickets to three events of your choice.

This Global Arts experience is valued at over \$14,000.

### ENTRY

To enter, you will need to answer today's five questions about the Telstra Adelaide Festival '96 and then look to next Saturday's (October 28, 1995) Arts Pages in the Review Section of The Weekend Australian for the final five questions. To be eligible for the prize draw you must correctly answer all ten questions.

Your official entry form will appear next week with the final five questions in Review.



### THE QUESTIONS

1. Who is the Artistic Director of the Telstra Adelaide Festival 96?
2. Where do the Mystical Whirling Dervishes appearing at the 1996 Festival come from?
3. "The Ethereal Eye" is an evocation through music, dance and image on the ideas and architectural spaces of Walter and Marion Burley Griffen. Specifically mounted for the Adelaide Festival, who is this production's Choreographer?
4. "Claustrophobia" is a lyrical and epic account of how Russians see our tumultuous world. Which theatre company has brought this production to the Adelaide Festival?
5. Appearing for the first time in Australia and exclusive to the Adelaide Festival, the Batsheva Dance Company will enthral Australian audiences. Where in the world does this leading Dance Company hale from?

Keep your Adelaide Festival Guide with you, to complete your entry you will need to answer 5 more questions in The Weekend Australian's Arts Pages on October 28, 1995.

### CONDITIONS OF ENTRY

The competition closes with the last mail received on Friday, November 17, 1995. The winner will be the first correct entry drawn at 10am on Monday, November 20, 1995 at News Limited, 2 Holt Street, Surry Hills, NSW. The winner will be notified by mail and published in the Public Notices section of The Weekend Australian on December 2. All entries must consist of ten answers and be accompanied by an official entry form from The Weekend Australian of October 28, 1995. No photocopies will be accepted. Employees of News Limited, Telstra 1996 Adelaide Festival, Ansett Australia, Hilton hotels, Malaysian Airlines, Newsagents, associated agencies and their families are ineligible to enter. The prize consists of business class airfares from the winner's closest capital city to Adelaide and return with Ansett Australia. Return business class airfares from the winner's closest capital city to London and connection to Edinburgh with Malaysian Airlines "Golden Club". Three nights accommodation in Adelaide, five nights accommodation in London and five nights accommodation in Edinburgh with Hilton hotels. Accommodation is on a twin share basis. Three double tickets to the winner's choice of performances at both the 1996 Telstra Adelaide Festival and The 1996 Edinburgh Festival. Breakfasts only are included with the accommodation. All passports, insurance, departure tax and items of a personal nature are the winner's responsibility. The prizes are non transferable and non redeemable for cash. Air travel, accommodation and Festival tickets are subject to availability at the time of booking. The judges decision is final and no correspondence will be entered into.



ANSETT AUSTRALIA



CS10/95A

# When you were a child what did you want to be?

Did you dream of running  
away to join the circus,  
of being a painter,  
or becoming a famous musician?

When you were a kid  
you wanted to be a grown-up,  
to enjoy living your dreams.

When you grew up  
you realised that to enjoy life  
you have to be healthy first.

To be healthy means  
being active, eating the  
foods that make you healthy,  
choosing to drink less alcohol  
and choosing not to smoke.

To realise your dreams,  
the first step is to...

Enjoy being healthy



PROMOTING A STATE OF HEALTH  
THROUGH SPONSORSHIP OF THE ARTS

# TENSILE STRUCTURES

A DAZZLING SERIES OF RECITALS WHICH LOOK AT THE RELATIONSHIP BETWEEN MUSIC, ARCHITECTURE AND ECSTASY THROUGH AN ASTOUNDING RANGE OF MUSIC WRITTEN FOR THE PIANO, THE FORTEPIANO, THE HARPSICHORD AND THE HARP. A DIVERSE AND SURPRISING VOYAGE ACROSS THE MUSICAL LANDSCAPES OF FOUR CENTURIES FEATURING PERFORMERS FROM AUSTRALIA AND ABROAD. FROM BACH TO FRANK ZAPPA, BUSONI TO LIGETI: TENSILE STRUCTURES IS AN UNPRECEDENTED PROGRAM OF MUSICAL RAPTURE.

## RUSSIAN CONSTRUCTIVISM AND THE SOLO PIANO

Australian pianist and composer LARRY SITSKY plays the music of Russian composers from the artistic utopia of the immediate post-Revolution period. Experimental and often bizarre music from one of the most convulsive and influential periods of European culture. Most of this music has never before been performed in Australia.

ELDER HALL  
March 5 at 1pm

Music by Rebikov, Lourié, Roslavets, Polovinkin and Mossalov

\$18/\$15(Friends)/\$12(SPU)

Duration: 1 hour

ELDER HALL  
March 7 at 1pm

Music by Krein, Obukhov, Lourié, Roslavets and Shcherbachev

\$18/\$15(Friends)/\$12(SPU)

Duration: 1 hour

## from the street

New York based Australian pianist LISA MOORE plays a rare program by Leos Janáček. Haunting, intricate and poignant sounds from the master of 20th century Czech music.

ELDER HALL  
March 13 at 5.45pm

Five works by Janáček

\$25/\$21(Friends)/\$15(SPU)

Duration: 1 hr 30 mins

## CATHEDRALS OF SOUND

Adelaide born and Amsterdam based GEOFFREY DOUGLAS MADGE performs a series of recitals examining the relationship between architecture and piano music. Monumental, frenzied and challenging works tracing links between keyboard music from Bach to Xenakis.

ELDER HALL  
March 10 at 4pm

Music by Beethoven and Ives

\$25/\$21(Friends)/\$15(SPU)

Duration: 1 hr 30 mins

ELDER HALL  
March 11 at 5.45pm

Music by Krenek, Wolpe, Scelsi and Xenakis

\$25/\$21(Friends)/\$15(SPU)

Duration: 1 hr 30 mins

ELDER HALL  
March 15 at 8.30pm

Music by Bach/Busoni, Liszt/Busoni and Busoni

\$30/\$26(Friends)/\$20(SPU)

Duration: 1 hr 20 mins

ELDER HALL  
March 17 at 4pm

Bach: Goldberg Variations

\$25/\$21(Friends)/\$15(SPU)

Duration: 1 hr 20 mins

## ruth is sleeping

Co-winner of the 1993 Ivo Pogorelich International Piano competition, MICHAEL KIERAN HARVEY plays a virtuosic program of piano music from Scriabin to Frank Zappa.

ELDER HALL  
March 6 at 8pm

Music by Burt, Scriabin, Campbell, Harvey, Vine, Zappa and Macek

\$35/\$30(Friends)/\$23(SPU)

Duration: 1 hr 40 mins

## HOMAGE TO BACH HUNGARIAN ROCK

AND OTHER FANTASIES FOR THE HARPSICHORD AT THE CLOSE OF THE MILLENIUM

Melbourne based harpsichordist ELIZABETH ANDERSON plays solo harpsichord music from bizarre reworkings of the well-known to the deliciously and outrageously weird. The harpsichord will never sound the same again!

ELDER HALL  
March 2 at 3pm

Music by Kagel, Heiller, JS Bach, Rochberg and Bartok

\$25/\$21(Friends)/\$15(SPU)

Duration: 1 hr 10 mins

QUEEN'S THEATRE  
March 3 at 8.30pm

Music by Kagel, Angle, Albright, Mageau, Whiffin, Bonington, Brown and Ligeti

\$25/\$21(Friends)/\$15(SPU)

Duration: 1 hr 10 mins

## ROSSINI: SINS OF OLD AGE

Melbourne based pianist STEPHEN McINTYRE in three concerts featuring the sometimes hilarious and always entertaining works by one of the masters of comic music Giacomo Rossini. He is joined by Elizabeth Campbell, Michael Martin and Janis Laurs for these special festival concerts of 19th century Italian wit and vivacious enjoyment.

FESTIVAL CENTRE BANQUET ROOM  
March 15 at 5.45pm  
March 16 at 5.45pm  
March 17 at 3pm

Individual Ticket \$25/\$21(Friends)/\$15(SPU)

Series Ticket - 3 performances  
\$60/\$49.50(Friends)/\$30(SPU)

Duration: 1hr

## Buenos Aires via Warsaw

Israeli pianist JONATHAN SHIN'AR plays the music of South American composer Alberto Ginastera and Fryderyk Chopin. Lyrical, haunting melodies and fiery rhythms from Buenos Aires.

ELDER HALL  
March 15 at 1pm

Music by Chopin and Ginastera

\$18/\$15(Friends)/\$12(SPU)

Duration: 1hr

## fortepiano and friends

GEOFFREY LANCASTER plays the fortepiano with a sensitivity and style that is unique. In these three recitals with Ensemble of the Classic Era, Lancaster reveals the complexities and challenges of 18th century fortepiano music.

PROGRAM 1: ELDER HALL  
March 15 at 5.45pm

Selected Beethoven Sonatas  
Soloist: Geoffrey Lancaster, fortepiano

Duration: 1hr 40mins

PROGRAM 2: ELDER HALL  
March 16 at 5.45pm

Duo and Trio Sonatas by C.P.E.Bach  
Soloists: Kate Clark (baroque flute), Paul Wright (baroque violin), Geoffrey Lancaster (fortepiano)

Duration: 1hr 40mins

PROGRAM 3: ELDER HALL  
March 17 at 1pm

Symphonies and Piano Trio by Haydn  
Soloists: Paul Wright (baroque violin), Susan Blake (baroque cello), Geoffrey Lancaster (fortepiano)

Duration: 1hr 20mins

Individual Ticket \$25/\$21(Friends)/\$15(SPU)  
Series Ticket - 3 performances  
\$60/\$49.50(Friends)/\$30(SPU)

## FIVE MEETINGS WITH A HARP

Harp virtuoso MARSHALL MCGUIRE performs music specifically written for that most enigmatic of instruments, the harp. McGUIRE plays music that will challenge, provoke, enthral and alarm.

MEETING 1: ELDER HALL  
March 5 at 5.45pm

Music by Solbiati, Finnis, Kerry, Donatoni, Berio, Gubaidulina, Carter and Kats-Chernin

\$25/\$21(Friends)/\$15(SPU)

Duration: 1 hr 20 mins

MEETING 2: ELDER HALL  
March 8 at 5.45pm

Music by Benjamin Britten  
Soloist: Gerald English (tenor)

\$25/\$21(Friends)/\$15(SPU)

Duration: 1 hr

MEETING 3: QUEEN'S THEATRE  
March 10 at 8.30pm

Music by Donatoni, Bennett, Gubaidulina, Brophy, Takemitsu and Debussy  
Soloists: Geoffrey Collins (flute) and Patricia Pollett (viola)

\$25/\$21(Friends)/\$15(SPU)

Duration: 1 hr 25 mins

MEETING 4: ELDER HALL  
March 12 at 8.30pm

Music by Chesworth, Ford, Steenhuisen, Whitticker, Yun and Alvarez

\$25/\$21(Friends)/\$15(SPU)

Duration: 50 mins

MEETING 5: ELDER HALL  
March 14 at 1pm

Music by Rameau, Glanville-Hicks, Hindemith, Sculthorpe and Tournier

\$18/\$15(Friends)/\$12(SPU)

Duration: 45 mins

A DETAILED GUIDE TO THE MUSIC PROGRAM WITH INFORMATION ON ALL PERFORMANCES, COMPOSERS, WORK PERFORMED AND PARTICIPATING MUSICIANS WILL BE AVAILABLE IN EARLY FEBRUARY. TO RESERVE YOUR COPY FILL IN ORDER FORM ADJACENT TO PAGE 40.

SPONSORED BY  
Enjoy being healthy  
Foundation SA

# LA FURA DELS BAUS - M.T.M.

"THE RHYTHM OF THE PERFORMANCE IS EXTREMELY FAST AND TREPIDOUS, LIKE A ROLLER COASTER, FOR EVERYTHING IS CONDENSED INTO 80 MINUTES. IT IS AS IF THE AUDIENCE IS STUCK IN A PRINTING PRESS AND SUBMITTED TO VARIOUS DEGREES OF PRESSURE ACCORDING TO THE MULTI SENSORIAL INFORMATION WITH WHICH THEY ARE BEING BOMBARDED. (IT IS) NEW OPERA AS AN ECSTATIC RITUAL: A CLEAR, DIGITAL AND COMPACT EXPERIENCE, WHICH TRANSMITS ITSELF DIRECTLY TO THE SUBCONSCIOUS OF THE SPECTATOR"

LA FURA DELS BAUS

LA FURA DELS BAUS is one of the great theatre phenomena of the last decade. In their only Australian appearance at the Adelaide Festival, this outrageous and provocative company from Barcelona will present their latest work, M.T.M.

M.T.M. is an explosive and ferocious theatrical experience, the performance space inhabited by both the audience, the performers, 150 cardboard boxes, huge video screens, frightening orthopaedic torture devices and pounding techno music.

In LA FURA's production, it's not worth standing in a corner to watch. M.T.M. invades the audience's living space with an apocalyptic vision of the last decade of the twentieth century. Media manipulation, censorship, pornography and war are all explored in a piece of theatrical madness. Enter into the nightmare of the Dystopia!

RIDLEY PAVILION, WAYVILLE SHOWGROUNDS  
 March 12,13,14,17 at 7pm  
 March 15, 16 at 10pm

\$40/\$34(Friends)/\$28(SPU)  
 Duration: 1 hr 15 mins (no interval)

Please note that seating is not provided for these performances.

**RATED (R)**  
 THIS PRODUCTION CONTAINS LANGUAGE AND SCENES WHICH SOME AUDIENCE MEMBERS MAY FIND OFFENSIVE - SUITABLE FOR ADULTS ONLY



## australian string quartet

The AUSTRALIAN STRING QUARTET has come of age as a leading ensemble of international status, celebrating its tenth anniversary in 1995. The Quartet is now Australia's longest standing, full-time professional quartet with a busy career of teaching, performing, touring, broadcasting and recording. Regular guests of the Adelaide Festival, the Quartet's three Festival programs will feature the last string quartets of Beethoven.

ELDER HALL  
 March 3 at 3pm  
*String Quartets Op. 127 & 130*  
 March 9 at 3pm  
*String Quartets Op. 135 & 131*  
 March 16 at 3pm  
*String Quartets Op. 132 & 133*

\$25/\$21(Friends)/\$15(SPU)  
 Series Ticket - 3 Performances  
 \$60/\$49.50(Friends)/\$30(SPU)

Durations: 1hr 30 mins

## taiko drummers of ota

The frenzied and exciting sound of Taiko drumming dates back from the start of Edo Period (1600 AD), where local residents would beat drums as a way of worshipping guardian deities. This custom was passed on through generations and today, many cities like Ota have a rich tradition of Taiko drumming. THE TAIKO DRUMMERS OF OTA have successfully developed a traditional performing art into something more modern. The sound of the beating drums is combined into a vital, spiritual performance which leaves audiences dazzled and spellbound. The physical energy and excitement of these young drummers will leave you breathless and exhilarated.

RED SQUARE, TORRENS PARADE GROUND  
 March 5 at 8.30pm

\$30/\$26(Friends)/\$21(SPU)

Duration: 1hr 30mins

## adelaide chamber orchestra

Under Artistic Director Richard Mills, the ADELAIDE CHAMBER ORCHESTRA has rapidly developed its reputation for excellence in performance and imagination in programming. For this year's Festival, the orchestra will perform Sofia Gubaidulina's beautiful "Homage to T.S. Eliot", a new work by Gerard Brophy and H.K. Gruber's hilarious and bizarre "Frankenstein".

*Brophy: Forbidden Colours*  
*S. Gubaidulina: Homage to T.S. Eliot*  
 Soloist: Merlyn Quaife  
*Brophy: New Work for Harp and Ensemble (world premiere)*  
 Soloist: Marshall Maguire  
*H.K. Gruber: Frankenstein*  
 Soloist: Lyndon Terracini

ADELAIDE TOWN HALL  
 March 4 at 8.30pm

A Res \$45/\$38(Friends)/\$28(SPU)  
 B Res \$38/\$33(Friends)/\$25(SPU)



## New Songs, Old Century

robyn archer and cathie travers

Australia's finest chanteuse ROBYN ARCHER teams with keyboardist/composer extraordinaire CATHIE TRAVERS in a rare program of contemporary song cycles. With a vibrant eight piece ensemble they present the Australian premiere of British composer Lindsay Cooper's Sahara Dust and the premiere recital showing of Alan John's The Last Decade. Both sets of lyrics written by ARCHER herald an exciting new dimension of her songwriting: with these works the tradition of the song cycle is redefined in the language of cabaret and the avant garde.

ADELAIDE TOWN HALL  
 March 10 at 5.45pm

A Res \$35/\$30(Friends)/\$25(SPU)  
 B Res \$30/\$25(Friends)/\$20(SPU)

Duration: 1hr 50mins

PRESENTED IN ASSOCIATION WITH THE FESTIVAL OF PERTH

PRESENTED BY  
 ADELAIDE  
 #111TON

# light ruins of the future

**LIGHT** is a mesmerizing site installation evoking the last months and other life of Colonel William Light - the man who conceived the original plans of Adelaide. The site design, by South Australian artist Hossein Valamanesh, stages a trajectory from the burning of Light's temporary home (January, 1839), to the destruction of his permanent home at Thebarton (in the 1920's - a passage from one death and resurrection to another).

The sound sculpture, by writer and radio maker Paul Carter, distributed along two "breathing tracks" through the Torrens River bank site, is a multi-lingual voice collage drawing on Light's last diary and exploring Light's "inner speech" - a transcendent collage of tongues reflecting his life.

Master and Teacher of classical Indian and Malay dance forms, Chandrabhanu, will perform a specially commissioned "path of fire" that integrates with Carter's sound, and Valmanesh's light. Chandrabhanu's performances will take place on March 8, 9, and 10.

**PINKY FLAT,**  
**NORTH BANK OF TORRENS RIVER**  
Installation: March 1-17

Admission Free

Performances: March 8, 9, and 10

\$20/\$15(Friends/SPU)

A CO-PRODUCTION WITH ABC RADIO ARTS.

ASSISTED BY THE HYBRID ARTS BOARD OF THE AUSTRALIAN



# artists' week 96 - compost

Australia's major visual arts forum as you've never seen it before, examining notions of public and private space, the construction of idiosyncratic identity and representations of the contemporary suburb. Through an exciting program of forums, exhibitions and workshops **ARTISTS' WEEK 96 - COMPOST** will propel visual arts debate into the streets, backyards, scout halls and living rooms of Adelaide where 15 artists will present their work in private homes in the suburb of Norwood.

For this unique project, ticketing is required to enable circulation to each venue.

Curated by David O'Halloran, John Barbour and Paul Hewson

## EXHIBITION

Christopher Snee  
Suzanne Treister  
Steve Wigg  
Hany Armanious  
Guan Wei  
Anna Platten  
Stephen Bush  
Helen Fuller  
Stephen Bram  
Howard Arkley  
Leah King-Smith  
Maria Kozic  
Tony Schwensen  
Constance Zikos  
Regina Walters

## SPEAKERS PROGRAM

Anne Graham  
Christopher Chapman  
Jean Duruz  
Margaret Plant  
Paul Carter  
Ross Harley  
Chris McAuliffe  
Leah King-Smith  
John Barbour &  
David O'Halloran  
Pat Naldi &  
Wendy Kirkup  
Dan Graham  
Doreen Mellor

## WORKSHOPS

Geoff Lowe  
Christopher Snee

Other **ARTISTS' WEEK 96 - COMPOST** events and guests to be announced. See the Visual Arts newspaper, to be released in February 96 for further information. To order your copy see Artists' Week mail order form.

## ARTISTS' WEEK 96 - COMPOST

Exhibition: March 7 -15

Speakers Program: March 11 -15

\$14/\$6(SPU)

ASSISTED BY VISUAL ARTS & CRAFTS BOARD  
OF THE AUSTRALIA COUNCIL AND THE  
CITY OF KENSINGTON & NORWOOD.



## How to Book

Mail Bookings for Season Ticket holders open October 21.  
Friends of the Festival Mail Bookings open November 1.  
Counter and Mail Bookings for all patrons open November 13.  
There are four easy ways to book for Festival events:

### 1. BOOKING BY TELEPHONE\*

Telephone BASS 13 12 46

Bankcard/Mastercard/Visa/American Express/Diners Club

9.00am-8.00pm Monday to Saturday

Interstate: 008 888 327

Telephone bookings incur a \$1.80 per ticket service fee.

### 2. BOOKING BY MAIL

Complete the enclosed booking form and mail with remittance and \$4 postage and handling fee to:

Festival Bookings

GPO Box 1269, Adelaide SA 5001

### 3. BOOKING BY FACSIMILE\*

Facsimile the enclosed booking form with credit card number and expiry date to: Facsimile No. 08 216 8956

Facsimile bookings incur a \$4 postage and handling fee

### 4. BOOKING IN PERSON

Book in person at the Festival Centre or any BASS outlet - Counter bookings incur a \$1.20 per ticket service fee.

Interstate Bookings by telephone 008 888 327 or by facsimile 08 216 8956

### 5. GROUP BOOKINGS

Groups of 20 or more may book for any performance at the Group Concession Price, which is equivalent to the Friends' price for that event. For information call the Group Sales Coordinator on 08 213 4666

\*PLEASE NOTE: Tickets for all performances at THEBARTON THEATRE are also available from VENUE\*TIX, Telephone 08 223 7788 Facsimile 08 223 6555

## FESTIVAL INFORMATION

For ticket or booking information telephone

Metro/Country: 13 12 46

Interstate: 008 888 327

International: +61 8 216 8925

General enquiries: Adelaide Festival office +61 8 226 8111

If you would like extra copies of the Booking Guide or to be on the Festival mailing list, please telephone the Festival office on 08 226 8111

## YOUTH PROGRAM

Detailed information about the Festival's program of schools' performances will be distributed to South Australian schools in term 4.

For information call the Education officer on 08 216 8861

## TRAVEL INFORMATION

Ticket & Tour Packages

Available from all ANSETT AUSTRALIA offices

National Reservations Line 13 13 00

## SOUTH AUSTRALIAN TOURISM COMMISSION

Travel Information and assistance is also available. Adelaide office: 08 212 1505  
All other Australian States, call the National Toll Free Line on 1800 882 092

Overseas Offices: Singapore 65 222 3660; Tokyo 03 326 28981;  
London 181 545 0450; Santa Anna 714 852 2270; Auckland 9 307 6600.

# Telstra Adelaide Festival 96 Booking Form

Send with your remittance to Adelaide Festival Bookings, BASS, GPO Box 1269, Adelaide SA 5001 or facsimile with credit card details to (08) 216 8956.

Name: Mr/Mrs/Miss/Ms/Dr. ....

Address: .....

.....Postcode .....

Telephone Day .....Night .....

Please complete this section if claiming concession prices.

I am a Friend of the Festival  Member No. ....

Please note: Friends of the Festival may purchase up to 4 tickets per event at Friends' concessions.

Pensioner Name .....Number .....

Unemployed Name .....Number .....

Student Name .....Number .....

Student Date of Birth .....Institution .....

EVENT NAME	DATE	TIME	FULL PRICE NO. @ \$	FRIENDS/B RES NO. @ \$	SPU NO. @ \$	TOTAL \$
			@	@	@	
			@	@	@	
			@	@	@	
			@	@	@	
			@	@	@	
			@	@	@	
			@	@	@	
			@	@	@	
			@	@	@	
			@	@	@	
			@	@	@	
			@	@	@	
			@	@	@	
			@	@	@	

TOTAL TICKET COST	
MAIL/FACSIMILE BOOKING FEE	\$4.00
FRIENDS OF THE FESTIVAL MEMBERSHIP @ \$55 SINGLE \$90 DOUBLE	
TOTAL DUE	

## METHOD OF PAYMENT

Cheque payable to BASS  
 Bankcard  Visa  Diners  Mastercard  American Express

Expiry Date ..... Signature .....

Disabled access required. Please provide details .....

CONDITIONS OF SALE: THERE WILL BE NO REFUNDS OR EXCHANGES ON COMPLETED BOOKINGS. THE ADELAIDE FESTIVAL RESERVES THE RIGHT TO ALTER PROGRAMS AND ARTISTS WHERE NECESSARY WITHOUT NOTICE. THE TAKING OF PHOTOGRAPHS AND THE USE OF ANY RECORDING DEVICE AT ANY FESTIVAL PERFORMANCE ARE STRICTLY FORBIDDEN.

# Festival Season Ticket

THE BEST WAY TO BOOK FOR THE TELSTRA ADELAIDE FESTIVAL 96...  
 PREMIUM SEATS GUARANTEED. PRIORITY BOOKINGS ASSURED.  
 USE IT TO BOOK THE BEST AVAILABLE SEATS EARLY - SEASON TICKET  
 HOLDERS WILL ENJOY A PREFERRED AND EXCLUSIVE BOOKING PERIOD  
 FROM OCTOBER 21ST TO 31ST INCLUSIVE.

## SEASON TICKET BENEFITS

Only as a member of the Friends of the Festival can you purchase the Festival Season Ticket.

As a Season Ticket holder you will receive:

- Priority booking on 'A' Reserve tickets for all selected events with an exclusive booking period from October 21st to 31st inclusive.
- Two complimentary tickets to the Elder Hall lunchtime performances of chamber music.
- Complimentary event programs for selected performances.
- Membership of the exclusive Ansett Friends' Lounge.
- Meal Vouchers to the value of \$20, redeemable at the Ansett Friends' Lounge.
- Festival Taxi vouchers to the value of \$30.
- Discounts on additional tickets - as a Season Ticket holder, you may purchase up to four additional seats to each event selected on the Season Ticket Booking Form. These additional seats are at the Friends preferential price.

## PRICES:

The Festival Season Ticket - \$ 465.00

(plus \$55 for Friends of the Festival membership)

Holders of a Festival Season Ticket can book a total of twelve seats from the full 1996 Adelaide Festival program by selecting:

- one seat to each of twelve different events, or
- a pair of seats at each of six events, or
- a combination of pairs and singles (but not more than two seats per individual event)

Note: The twelve tickets must be taken as four tickets from each of three groups shown on the season ticket booking form

## SEASON TICKET HOTLINE

Subscribe before October 25th and receive two bonus tickets to a preview performance of Romeo and Juliet.

Call Dial and Charge 13 12 46 (SA) 008 888 327 (Interstate)

Your mail booking form will be dispatched on the same day!

For further information call Rose Larkin on 08 216 8925

THE FESTIVAL SEASON TICKET IS FULLY TRANSFERABLE. MAKE UP A SYNDICATE AT WORK, WITH FRIENDS OR BOOK FOR THE FAMILY.

## "TAKE ME TO THE HILTON...I'D LIKE TO SLEEP ON THE FLOOR"



Stay at the Hilton, and for an extra \$30pp a night - throughout 1995 and 1996 - you can enjoy Executive Floor facilities, including: complimentary drinks from an open bar in the executive lounge, complimentary canapes and use of a conference facility for short meetings, continental breakfast, and later check-out until 4pm.

The Floor has its own concierge, and for very reasonable cost you've got the use of fax, photocopier, PC, printer - plus office/secretarial services.

For reservations, please call 1 800 222 255, (267 6000 in Sydney) or call your AFTA travel agent.

## RUSH ME

information on all Hilton Business Services. Thanks.

To: Hilton International, Business Services, GPO Box 3934, Sydney, NSW 2001. Or fax: (02) 283 2607

Name: \_\_\_\_\_

Position: \_\_\_\_\_

Company: \_\_\_\_\_

Address \_\_\_\_\_

\_\_\_\_\_ P/C \_\_\_\_\_

Ph: \_\_\_\_\_

HILTON  
INTERNATIONAL

ADELAIDE\* · BRISBANE\* · CAIRNS\* · MELBOURNE\* · PERTH · SYDNEY\* · SYDNEY AIRPORT

\*Executive Floor Available.

HILTHINT 4332

# the 1996 adelaide biennial of australian art

■ The ADELAIDE BIENNIAL has quickly established itself as one of the most important surveys of Australian Art. For 1996, curator Christopher Chapman has assembled an exhibition of dizzying diversity by 20 artists spanning the generations. Architectures of identity and ghosts of reality at the Art Gallery of South Australia.

Craige Andrae	Brook Andrew
James Angus	Catherine Bell
Gordon Bennett	Kate Beynon
Shane Breynard	Aadje Bruce
Adam Cullen	eX de Medici
Dale Frank	D. Zippi and Zöe Laggner
Pat Larter	Richard Larter
David McDowell	Bronwyn Platten
Paul Quinn	Scott Redford
Mike Stevenson	Alison Weaver

## ART GALLERY OF SOUTH AUSTRALIA

ASSISTED BY THE VISUAL ARTS & CRAFTS BOARD  
OF THE AUSTRALIA COUNCIL



# off the rails

■ ANNE GRAHAM's latest work will be created for the Adelaide Festival at the Adelaide Railway Station and will respond to the existing architecture in a formal, sculptured way. By breaking up the space, altering the experience of the people who pass through it, and responding to situations generated by the piece, GRAHAM will present an evocative rumination on travel, escapism, displacement and desire.

ADELAIDE RAILWAY STATION CONCOURSE  
March 12-15

PRESENTED IN ASSOCIATION WITH THE UNIVERSITY OF SOUTH AUSTRALIA  
ART MUSEUM, ASSISTED BY TRANSADELAIDE.

# native title now -

INDIGENOUS VOICES  
(ART)ICULATE/  
MARALINGA NULLIUS.

■ Presented by Tandanya National Aboriginal Cultural Institute NATIVE TITLE NOW is a challenging and thought provoking exhibition exploring land issues from an Australian indigenous perspective.

The first component, Maralinga Nullius, will present compelling paintings by Jonathon Kumantjara Brown which document the atomic tests at Maralinga in the fifties and their implications for Aboriginal people - and, indeed, all Australians.

The second component, Indigenous Voices (Art)iculate, will present personal interpretations of the landmark High Court decision on Native Title by Aboriginal and Torres Strait Islander artists.

NATIVE TITLE NOW will provide a vitally important forum for Aboriginal artists to address this significant issue.

Curated by Doreen Mellor

TANDANYA  
NATIONAL ABORIGINAL CULTURAL  
INSTITUTE

\$4/\$3(SPU)/\$10Family (2+2)

# big canvas

■ Specially commissioned by the SA Museum from the WARLUKURLANGU ABORIGINAL ARTISTS at Yuendumu, for the Adelaide Festival, the sculptures, paintings and videos that form this exhibition provide audiences with extensive documentation, in contemporary forms, of tribal ceremonies and dreamings. In these commissions the kirda (owners) and kurdungurlu (guardians) of the Dreamings are both working, and negotiating the process of the art works' creation. Not another canvas and dots exhibition.

Curated by Philip Jones

SA MUSEUM

# art across the oceans - 96 containers

■ The Adelaide Festival will be hosting the Australian and New Zealand component of one of the most ambitious international visual arts projects of 1996: Ninety-six visual artists from ninety-six cities around the world exhibit in ninety-six shipping containers harbour side in Copenhagen. The Adelaide Festival will exhibit the work of the four Australian and three New Zealand artists whose work will then be shipped direct to Copenhagen, the Cultural Capital of Europe in 1996. Art in a different box!

Jacqueline Fraser	Denise Kum
L. Budd	Fiona Hall
Leigh Hobba	Fiona Foley
Mutlu Çerkez	

Curated by David O'Halloran

SA MARITIME MUSEUM, PORT ADELAIDE

ASSISTED BY THE ARTS COUNCIL OF NEW ZEALAND TOI AOTEOROA AND  
THE VISUAL ARTS & CRAFTS BOARD OF THE AUSTRALIA COUNCIL.



# rosalie gascoigne

■ ROSALIE GASCOIGNE's sculptures and installations will make you re-examine your notions of what it is you value - materially and aesthetically. Rosalie liberates debris of any negative connotation, and poetically imbues these materials to an elevated state of art object. All materials carry values and sometimes memories; Rosalie's choice of elements within her work have formal and informal linkages that sing with pure harmony.

Rosalie's platform has always been nature. More as inspiration than imitation. ROSALIE GASCOIGNE represented Australia (with Peter Booth) at the Venice Biennale, and continues to show regularly in Sydney and Melbourne. This is her first Adelaide exhibition.

GREENAWAY GALLERY

# a bow of burning gold: some arrows of desire

■ Renowned Australian architect and stage designer PETER CORRIGAN will create a room of fragments and images that provide an insight into the nature and content of the "end product" architecture produced in his office. A collage of objects, texts, paintings and drawings, this exhibition will provide a labyrinth-like map for the work of this remarkable Australian architect.

ARTSPACE, FESTIVAL CENTRE

# ozone / night & day

■ Two projects by STEPHAN BARRON exploring the technologies of telecommunications in a poetic reflection about geography and distance. OZONE is a meditation on the ozone layer, planetary interdependence, immateriality and telecommunications. NIGHT AND DAY is an interactive telematic installation which will calculate the average colour of the skies of Adelaide and Sao Paulo in Brazil. The sensuality of distance and the purity of ubiquity.

MISS GLADY'S SYM CHOON GALLERY

STEPHAN BARRON HAS BEEN ASSISTED BY THE ASSOCIATION FRANÇAISE  
D'ACTION ARTISTIQUE

# rea

■ REA's work incorporates photographic images, installations, text and sound. Within three rooms, especially created for the Adelaide Festival, REA will create spaces reflecting upon how the indigenous peoples of Australia have been condemned to invisibility and how icons have been used to represent them. Thus indigenous peoples are often only visible through inaccurate and clumsy artefacts.

CONTEMPORARY ART CENTRE  
OF SOUTH AUSTRALIA

# alvar aalto: points of contact

■ Organised by the Alvar Aalto Museum in Finland and brought to Australia by the Government of Finland this exhibition examines key works in the career of ALVAR AALTO, one of the most pioneering and highly influential architects and designers of this century. The exhibition presents a cross section of AALTO's work including his famous furniture designs, focusing on his early major building, the Paimio Sanatorium (1929-32) and the later Villa Mairea (1938-39).

JAM FACTORY CRAFT & DESIGN CENTRE

# harry seidler

■ HARRY SEIDLER is one of the world's most distinguished architects. Born in Vienna and trained in the U.S.A., Seidler has practised in Australia for more than 40 years. Recently the City of Vienna commissioned him to design a major inner-city redevelopment on the banks of the River Danube.

A comprehensive exhibition of his work is at present touring Europe, and this will form the basis of the Festival exhibition in 1996. Special emphasis will be placed on the Vienna redevelopment and the proposed Grollo Tower for Melbourne - SEIDLER's most controversial current project.

ADELAIDE FESTIVAL THEATRE FOYER

# search

## Pat Naldi and Wendy Kirkup

■ PAT NALDI and WENDY KIRKUP from Newcastle-upon-Tyne will make a public art work in Adelaide using surveillance technologies within the city. They will produce a work for broadcast TV, and an installation for the EAF gallery using sound and video imaging. A complex interaction of shifts and traces which explores attitudes towards public and private identities experienced in the electronic age, as we hurtle towards the next millennium.

EXPERIMENTAL ART FOUNDATION

ASSISTED BY THE BRITISH COUNCIL.



# mladen stilinović

■ STILINOVIC's work encompasses creations with texts, paintings, drawings, books, photographs and actors. Born in Belgrade, and now based in Zagreb, he was a member of an informal group called Six Authors, whose exhibitions had a significant impact on the development of radical Croatian art in the second half of the seventies.

NORTH ADELAIDE SCHOOL OF ART

# john nixon

■ NIXON's work knowingly builds upon early 20th century avant-garde art. The experience and sensation of the viewer is at the centre of the "star-like" asymmetrical constellation of NIXON's new mini paintings, a new vowel in the language of this controversial Australian artist.

UNIVERSITY OF SA ART MUSEUM

A PROJECT OF THE ADELAIDE FESTIVAL AT THE UNIVERSITY OF SOUTH  
AUSTRALIA ART MUSEUM

# writers' week

Australia's pre-eminent international literary festival has been a central component of the Adelaide Festival since 1960. Novelists, dramatists, poets, editors, journalists and publishers come from all parts of the world to discuss their writing and its impact on the wider world. The week also includes launchings of new Australian and overseas titles, literary awards, readings and debates. A full program will be published in January.

## OVERSEAS WRITERS

Fred D'Aguiar	Malcolm Bradbury
Vikram Chandra	J M Coetzee
Adrian Edmondson	James Ellroy
Jostein Gaarder	Jane Garden
Sue Grafton	Josephine Hart
Giorgos Heimonas	Michael Ignatieff
Philip Jeyaretnam	Barry Lopez
Amin Maalouf	Paul Muldoon
E. Annie Proulx	Rupert Thomson
Barbara Trapido	Vassilis Vassilikos

## AUSTRALIAN WRITERS

Ken Bolton	Lily Brett
Kaz Cooke	Evelyn Crawford
Liam Davison	Bruce Dawe
Sara Dowse	Philip Drew
Fotini Epanomitis	Susan Errington
Steve Evans	Tim Flannery
John Forbes	Dr. Pene Greet
Kate Grenville	Rodney Hall
Marian Halligan	Christine Harris
Dr Colin Hope	John Jenkins
Gail Jones	Antigone Kefala
Paul Kelly	Cath Kenneally
Mike Ladd	Maureen McCarthy
Peter McFarlane	Humphrey McQueen
John Marsden	Meaghan Morris
Stephen Muecke	Neil Paech
Dorothy Porter	Gillian Rubinstein
Matt Rubinstein	Kim Scott
Trevor Sykes	Ania Walwicz
Glenys Ward	Herb Wharton
Ben Winch	Keith Windshuttle
Tim Winton	Amy Witting

## WRITERS' WEEK

IN THE WRITERS' WEEK TENTS,  
PIONEER WOMEN'S MEMORIAL GARDENS  
March 3-8

## TWO EVENINGS WITH VISITING WRITERS

### HER MAJESTY'S THEATRE

March 4 at 8pm

Vikram Chandra, Barry Lopez,  
E. Annie Proulx and Malcolm Bradbury

\$15/\$12(Friends)/\$10(SPU)

### HER MAJESTY'S THEATRE

March 5 at 8pm

Adrian Edmondson, Jostein Gaarder,  
Barbara Trapido and Sue Grafton

\$15/\$12(Friends/SPU)

A detailed program of events with information on all sessions and participating writers and speakers will be available a month before the Festival. To reserve your copy of the Writers' Week Program Guide please send your name and address with a cheque or money order for \$8 (made payable to The Adelaide Festival) to: Writers' Week Program Guide, GPO Box 1269, Adelaide SA 5001, Australia.

THIS PROJECT HAS BEEN ASSISTED BY THE COMMONWEALTH GOVERNMENT THROUGH THE AUSTRALIA COUNCIL, ITS ART FUNDING AND ADVISORY BODY.  
WRITERS' WEEK IS SUPPORTED BY ALLEN & UNWIN, AUSTRALIA-INDIA LITERARY COUNCIL, THE BRITISH COUNCIL, EMBASSY OF FRANCE, GREEK ORTHODOX COMMUNITY OF SOUTH AUSTRALIA, PAN MACMILLAN PUBLISHERS, PENGUIN BOOKS AUSTRALIA, NATIONAL ARTS COUNCIL, AND SINGAPORE, RANDOM HOUSE AUSTRALIA, THE FLINDERS UNIVERSITY OF SOUTH AUSTRALIA, THE STATE LIBRARY OF SOUTH AUSTRALIA, THE UNIVERSITY OF ADELAIDE, WILLIAM HEINEMANN PUBLISHERS, THE FESTIVAL UNIVERSITY OF SOUTH AUSTRALIA, UNIBOOKS, USIS.



PRESENTED BY... ASSISTED BY...  
A full program of events with information on all sessions and participating writers and speakers will be available a month before the Festival. To reserve your copy of the Writers' Week Program Guide please send your name and address with a cheque or money order for \$8 (made payable to The Adelaide Festival) to: Writers' Week Program Guide, GPO Box 1269, Adelaide SA 5001, Australia.

## in spaces unsuspected

This program of international cinema screens films from Europe, Britain, Israel, Australia and Japan - including films from Eastern Europe unseen in Australia, two international premieres, and several Australian premieres, including *Institute Benjamenta*, the recent feature film of the Brothers Quay. The films describe our own contemplations about space and our peculiar relationship to landscape and dwellings. The work selected is diverse, entertaining, often times witty and always visually entrancing.

### MERCURY CINEMA, 3 MORPHETT STREET, ADELAIDE

March 7 until March 13 with session times of 5.30, 7.30 & 9.30pm.  
Saturday March 9 at 2.00pm.

### HIGHLIGHTS OF THE PROGRAM INCLUDE:

- March 7 - *A Quiet Room*, Rolf de Heer, AUS International Premiere
- March 8 - *Portrait of a Young Girl in Brussels*, Ackerman FR
- March 9 - *Underground*, Kustarica, YUGO; *Institute Benjamenta*, Brothers Quay, UK
- March 10 - *Enak*, Idziak, POL; *Passions*, RUSSIA
- March 11 - *Sh'chur*, ISRAEL
- March 12 - *New Territories*, Computer Graphics, FR; *How Old is this River?* JAPAN
- March 13 - *Venus in Furs*, HOLLAND; *Labyrinthe*, CZECH

As this is an international film program, there is a minimum three session pass

Gold Pass All Sessions, \$92/\$72 (Friends/SPU)  
Silver Pass 10 Sessions, \$62/\$52 (Friends/SPU)  
Three Pass 3 Sessions, \$31/\$25 (Friends/SPU)

For complete program details contact the Media Resource Centre on 08 410 0979



## Paul Grabowsky and the Australian Art Orchestra

Launched in 1993, the AUSTRALIAN ART ORCHESTRA has quickly established itself as Australia's first national jazz orchestra boasting 18 of the country's finest improvising musicians. Under the leadership of PAUL GRABOWSKY, this exciting ensemble is a triumphant demonstration of what can be achieved with an orchestra dedicated to the development of a contemporary jazz repertoire.

## "QUITE SIMPLY THE BEST JAZZ THE COUNTRY HAS TO OFFER"

HERALD SUN, MELBOURNE

HER MAJESTY'S THEATRE  
March 2 at 5.45pm

A Res \$35/\$30 (Friends)/\$25 (SPU)  
B Res \$30/\$25 (Friends)/\$20 (SPU)

Duration: 2hrs (approx)

## Remmy Ongala and orchestra super matimila

Known as the "Doctor", REMMY ONGALA originally came from Kindu in North Eastern Zaire and moved to Dar es Salaam where he formed his own band SUPER MATIMILA.

The rolling melodic drive of Zairean soukous is undeniable, yet there is also the influence of traditional Tanzanian rhythms and hints of Latin and Soul. ONGALA'S presence is electrifying and his distinct voice, rich and soulful, soars above the lilting rhythms of his orchestra.

THEBARTON THEATRE  
March 11 at 8pm

\$35/ \$30 (Friends)/\$25 (SPU)

Duration: 2hrs (approx)

PRESENTED BY ARRANGEMENT WITH WOMADELAIDE.

## Paul Kelly with Archie Roach and Ruby Hunter

Originally from Adelaide, PAUL KELLY is one of Australia's most renowned songwriters and performers. KELLY has written songs for and with Kev Carmody, Mary-jo Star, Yothu Yindi, Nick Barker, Deborah Conway and Jenny Morris among others, as well as recording and performing with his own musicians. In this special Adelaide Festival concert KELLY is joined by ARCHIE ROACH and RUBY HUNTER for an evening of powerful acoustic music.

FESTIVAL THEATRE  
March 10 at 8pm

A Res \$35/\$30 (Friends)/\$25 (SPU)  
B Res \$30/\$25 (Friends)/\$20 (SPU)

SPONSORED BY  
Enjoy being healthy  
Foundation SA

## Nancy Sinatra with special guest Lee Hazelwood

Starting with her first number one smash "These Boots Are Made For Walkin'", NANCY SINATRA captured the eyes and ears of the music world with her highly unique and independent image. By embracing the lyrics of songs reflecting world-weary sophistication about lost love and the defiant "I'll get over it" attitude, Nancy's rebellious, musical persona set her apart from other singers of the era.

With Top 40 hits like "Sugar Town", "Jackson", "Some Velvet Morning", "Friday's Child" and "How Does That Grab You Darlin'", NANCY SINATRA has sold in excess of 8 million records worldwide. Nancy's "Boots" are indeed made for "walkin'" and they still have a long way to go!

Songwriter/producer Lee Hazelwood was heavily responsible for Nancy's 60's musical sound. "When we were recording BOOTS", Nancy remembers, "Lee told me, look Nancy, you're not a little girl any more. You've been married and divorced, now, really bite the lyrics and sing it for all the truck drivers out there."

FESTIVAL THEATRE  
March 17 at 8pm

A Res \$40/\$34 (Friends)/\$28 (SPU)  
B Res \$34/\$30 (Friends)/\$20 (SPU)

Duration: 1hr 25mins (no interval)

SUPPORTED BY  
FIVE AA  
ADELAIDE 1995AM



## opening night concert

The best music spectacular you never had to pay for. Elder Park will come alive to the electrifying sounds of Kronos Quartet, the Taiko Drummers of Ota, Giora Feidman, Paul Grabowsky and the Australian Art Orchestra and many more brilliant Festival guests.

**ELDER PARK**  
Friday March 1  
at 8pm



## picnic in the park

Bring the family! Bring a picnic! Watch a parade of musicians and famous performers as they entertain you in a delightful free concert suitable for young families.

**ELDER PARK**  
Sunday March 3  
at 5pm



## anz symphony under the stars

Join the ADELAIDE SYMPHONY ORCHESTRA under the stars in Elder Park for this much-loved Adelaide event featuring popular works from the classical repertoire.

**ELDER PARK**  
Saturday March 2 at 8pm

## adelaidE festival FORUMS

Artists, commentators and critics postulate, plead, polarize and wrangle a selection of issues related to the Festival. Spend your lunch hour listening and questioning. FORUM is invariably full, so be early.

## intersection: the meeting of art and architecture

The Royal Australian Institute of Architects 1996 National Convention will take place during the Festival from March 13-15. The convention is a biennial vehicle for debate and dialogue and in 1996 will explore the relationship between the practice of art and architecture.

FOR INFORMATION CALL SUE AVERY  
ON (08) 272 7044

## the discursive construction of knowledge -

### 2ND BIENNIAL CONFERENCE DISCOURSE AND CULTURAL PRACTICE

The conference, to be held at the Terrace Intercontinental Hotel from February 28 - March 3 will focus on contemporary critical theory and its relationship with the arts, social sciences and education.

FOR INFORMATION CALL JOHN KAYE  
ON (08) 303 5693

## Square A'fare

Bringing the wine regions of our state to the heart of the city and marrying them to exotic food and entertainment. The centrally located Victoria Square will come alive with the taste sensations of South Australia's finest foods complemented by our world class wines for a weekend of gourmet indulgence in the CBD! The SQUARE A'FARE will be held on the final weekend under the brilliant cobalt blue skies of the Adelaide Autumn. A unique event that cannot be duplicated anywhere in the world.

**VICTORIA SQUARE**  
March 16, 17



## Foreign A'fare



The Migration Museum presents a series of 5 multicultural banquets for the Adelaide Festival. Join Adelaide's leading chefs, SA's finest wineries, musicians, dancers and storytellers in a culinary delight held among heritage buildings in the beautiful courtyard enclosed by the Museum.

**MIGRATION MUSEUM**  
March 2, 8, 9, 15, 16

\$65/\$55(SPU)  
Series of three \$165  
Bookings (08) 207 7580



## sbs outdoor film season

An outdoor cinema that's open virtually all night! Watch some of the most illuminating, funny and alarming films ever made. The SBS OUTDOOR FILM SEASON is Cinema Under the Stars and is absolutely free!

**BANK SA AMPHITHEATRE,  
ELDER PARK**  
March 1-3, 5-10, 12-16  
Screenings from 10.30pm



DETAILS TO BE ANNOUNCED JANUARY 1996.

# elder hall concert series

■ **MONDAY, MARCH 4 AT 1PM**  
Ronald Woodcock (Violin)  
Stefan Ammer (Piano)  
Schnittke: *Suite in the Old Style*  
A Paganini for solo violin  
Quasi Una Sonata

■ **MONDAY, MARCH 4 AT 5.45PM**  
Kronos Quartet  
Julia Wolfe: *Dig Deep (written for Kronos)*  
Harry Partch: *Two Studies on Ancient Greek Scales (arranged for Kronos)(arr. Ben Johnston)*  
1. *Olympus' Pentatonic*  
2. *Archytas' Enharmonic*  
Mario Lavista: *Musica Para Mi Vecino (Music for My Neighbour) (written for Kronos)*  
P.Q. Phan: *Children's Games (written for Kronos)*  
Tragedy at the Opera (written for Kronos)  
Ken Benshoof: *Song of Twenty Shadows (written for Kronos)*  
John Adams: *Four Selections from John's Book of Alleged Dances (written for Kronos)*

■ **TUESDAY, MARCH 5 AT 1 PM**  
Larry Sitsky (Piano)  
Brackett/Rebikov pieces  
Lourie: *Syntez*  
Roslavets: *Sonata No.2*  
Polovinkin: *Ereignis*  
Mossolov: *Sonata No.1*

■ **TUESDAY, MARCH 5 AT 5.45PM**  
Marshall Maguire (Harp)  
Twentieth Century Harp  
Alessandro Solbiati: *Vézelay*  
Michael Finnis: *Tchaikovsky V & XII*  
Gordon Kerry: *No Atmosphere*  
Franco Donatoni: *Marches*  
Luciano Berio: *Sequenza II*  
S. Gubaidulina: *New work (Australian premiere)*  
Elliott Carter: *Bariolage*  
E. Kats-Chernin: *Chamber of Horrors*

■ **WEDNESDAY, MARCH 6 AT 1PM**  
The Turkish Mystical Music State Ensemble

■ **WEDNESDAY, MARCH 6 AT 5.45PM**  
Lights Ecstatic  
Charles Ives: *All the Way There and Back*  
Ross Edwards: *Ecstatic Dances*  
Maxwell-Davies: *Tenebrae Super Gesualdo*  
David Kotlowy: *Whirling (premiere)*  
Richard Meale: *Excerpt from Incredible Floridas*  
Andi Aldam: *Premiere new work (Australia Council commission)*



■ **THURSDAY, MARCH 7 AT 1PM**  
Larry Sitsky (Piano)  
Aleksandr Krein: *Sonata*  
Obukhov: *Pieces from The Book of Life*  
Lourie: *Forms in the Air*  
Roslavets: *5 Preludes*  
Shcherbatchev: *Sonata No.2*

■ **THURSDAY, MARCH 7 AT 5.45PM**  
The Turkish Mystical Music State Ensemble

■ **FRIDAY, MARCH 8 AT 1PM**  
The Turkish Mystical Music State Ensemble

■ **FRIDAY, MARCH 8 AT 5.45 PM**

Marshall Maguire (Harp)  
Gerald English (Tenor)  
Britten: *Second lute song from Gloria*  
Suite for Harp  
A Birthday Hansel  
Interlude from *A Ceremony of Carols*  
Canticle V - *The Death of St Narcissus*  
Eight Folksong Arrangements

■ **MONDAY, MARCH 11 AT 1PM**  
Janis Laurs (Cello)  
Lucinda Collins (Piano)  
Frescobaldi/Cassado: *Toccata*  
Beethoven: *Sonata in C major, Op.102, No.1*  
R. Strauss: *Sonata in F major, Op.6*

■ **MONDAY, MARCH 11 AT 5.45PM**  
Geoffrey Douglas Mudge (Piano)  
Beethoven: *Hammerklavier Sonata Op. 106*  
Ives: *Concord Sonata*

■ **TUESDAY, MARCH 12 AT 1PM**  
Bang on a Can Allstars -  
Louis Andriessen - Hout  
Louis Andriessen: *Hout*  
Martin Smolka: *New Work*  
John Godfrey: *New Work*  
Michael Smetanin: *New Work*  
Louis Andriessen: *Doublespoor*

■ **TUESDAY, MARCH 12 AT 5.45PM**

Jonathan Shin'ar (Piano)  
Scriabin: *Sonatas Nos. 1,3,4,5 & 9*

■ **WEDNESDAY, MARCH 13 AT 5.45PM**  
Lisa Moore (Piano)  
Janáček: *In the Mist (1912)*  
Sonata 1.X.1905 From the Street  
On an Overgrown Path (1901-11)  
- First Series  
- Second Series  
- Paralipomena

■ **THURSDAY, MARCH 14 AT 1PM**  
Marshall Maguire (Solo Harp)  
Rameau: *Suite in e minor*  
Glanville-Hicks: *Sonata*  
Hindemith: *Sonata*  
Sculthorpe: *From Kakadu*  
Tournier: *Sonatine*

■ **FRIDAY, MARCH 15 AT 1 PM**  
Jonathan Shin'ar (Piano)  
Ginastera: *12 American Preludes*  
*Sonata No.1, Op.22*  
Chopin: *Ballades Nos. 1 & 3*  
Scherzi Nos. 1 at 2

■ **FRIDAY, MARCH 15 AT 5.45PM**  
Geoffrey Lancaster (Fortepiano)  
Beethoven: *Sonata Op.10, No.1 in c minor*  
*Sonata Op.2, No.1 in f minor*  
*Sonata Op.14, No.2 in G major*  
*Sonata Op.13 in c minor*

ADMISSION TO LUNCH-HOUR CONCERTS  
\$18/\$15 (Friends)/\$12(SPU)

ADMISSION TO EARLY EVENING CONCERTS  
\$25/\$21(Friends)/\$15(SPU)

## the big backyard

Seven hours of non-stop rock! The Big Backyard Concert will feature the best and the newest of Australian and Adelaide contemporary and alternative rock music. A gigantic celebration of Australian rock music. Details to be announced early 1996.

**ADELAIDE ENTERTAINMENT CENTRE**  
March 8th 4pm-11pm

All tickets \$16.50



SPONSORED BY  
Enjoy being healthy  
Foundation SA



PAGE NO.	PERFORMING ARTS	TUE 27	WED 28	THU 29	FRI 1
25	ANGELS MARGARIT				6-7.30PM
13	ART ZOYD				
4, 5	BATSHEVA DANCE COMPANY				8PM
17	BETONTANC				
14	THE BLACK SEQUIN DRESS				
27	THE BLUE HOUR				
6	WHIRLING DERVISHES OF KONYA				
12	DVB PHYSICAL THEATRE				
16	THE ETHEREAL EYE				
31	EXCAVATION: THE LAST DAYS OF MANKIND			8PM	8PM
23	FACADE FIRM				
36	LA FURA DELS BAUS				
24	HANDSPRING PUPPET COMPANY				
13	PIERRE HENRY & SON RE				
14	IMAGE AIGUE & CHRISTAINE VERICEL		8PM	2 & 8PM	
15	INJE				6PM
17	KRAPP'S LAST TAPE				
18, 19	MALY THEATRE OF ST PETERSBURG				8PM
26	OPERATION: ORFEO				
9	OZOPERA				
27	RED SUN - RED EARTH				
25	ROMEO & JULIET	8.30PM	8.30PM	8.30PM	8.30PM
16	SOLSTICE				
21	ANNIE SPRINKLE				
27	STATION 2: EYE OF ANOTHER				
15	MEG STUART \ DAMAGED GOODS				8.30PM
31	YOUNG VIC THEATRE				
29	MERYL TANKARD AUSTRALIAN DANCE THEATRE				

MUSIC					
37	ADELAIDE CHAMBER ORCHESTRA	MUSIC BY GUBAIDULINA, (HOMAGE TO TS ELIOT) BROPHY AND GRUBER			
7	ADELAIDE SYMPHONY ORCHESTRA	MUSIC BY SCRIBIN, MESSIAEN, XENAKIS, GUBAIDULINA, HARTMANN			
37	ROBYN ARCHER & CATHIE TRAVERS	NEW SONGS, OLD CENTURY			
30	AMSTERDAM BAROQUE ORCHESTRA	MUSIC BY BACH, RAMEAU, MOZART AND HANDEL			
37	AUSTRALIAN STRING QUARTET	LATE BEETHOVEN STRING QUARTETS			
7, 25	AUSTRALIAN YOUTH ORCHESTRA	MUSIC BY SCRIBIN, MAHLER, MESSIAEN AND RAVEL			
22	BANG ON A CAN	VITAL, BRASH AND ENERGETIC CONTEMPORARY MUSIC			
31	OLAF BAER	LIEDER SONGS BY SCHUMANN AND WOLF			
30	BLUE MONDAY / TROUBLE IN TAHITI	STATE OPERA OF S.A.			
35, 7	BUENOS AIRES VIA WARSAW / SCRIBIN PIANO SONATAS	JONATHAN SHIN'AR (PIANO)			
34	CATHEDRALS OF SOUND	GEOFFREY DOUGLAS MADGE (PIANO)			
20	GIORA FEIDMAN TRIO	KLEZMER MUSIC AND ARGENTINIAN TANGOS			
35	FIVE MEETINGS WITH A HARP	MARSHALL MAGUIRE (HARP)			
35	FORTEPIANO AND FRIENDS	GEOFFREY LANCASTER (FORTE PIANO)			
43	PAUL GRABOWSKY & THE AUSTRALIAN ART ORCHESTRA	JAZZ MUSIC FOR ORCHESTRA			
35	HOMAGE TO BACH/HUNGARIAN ROCK	ELIZABETH ANDERSON (HARPSICORD)			
43	PAUL KELLY	SPECIAL GUESTS ARCHIE ROACH AND RUBY HUNTER			
8	KRONOS QUARTET	HOWL (WITH THE VOICE OF ALLEN GINSBERG); GHOST OPERA (TAN DUN)			
35	ROSSINI - SINS OF OLD AGE	STEPHEN MCINTYRE, ELIZABETH CAMPBELL AND MICHAEL TERRY			
34	FROM THE STREET	LISA MOORE (PIANO)			
43	REMMY ONGALA	ORCHESTRA SUPER MATAMILA			
20	TITO PUENTE LATIN JAZZ ENSEMBLE	KING OF MAMBO			
20	ARTURO SANDOVAL & THE LATIN TRAIN	ONE OF THE WORLD'S GREATEST JAZZ TRUMPETERS			
8	JORDI SAVALL / HESPERION XX	SPANISH AND ITALIAN MUSIC FROM THE SEVENTEENTH CENTURY			
34	RUSSIAN CONSTRUCTIVISM & THE SOLO PIANO	LARRY SITSKY (PIANO)			
34	RUTH IS SLEEPING	MICHAEL KIERAN HARVEY (PIANO)			
29	THE SONG COMPANY	TENEBRAE BY GESUALDO			
29	BEGUM PARVEEN SULTANA / USTAD DILSHAD KHAN	CLASSICAL VOCAL RENDITIONS FROM INDIA			
28, 29	THE SINGING MAP	LHAMO, BAULS, TENORES, THROAT SINGERS, BEBEY, NAMTCHYLAK			

SPECIAL EVENTS:					
44	ANZ SYMPHONY UNDER THE STARS	THE ADELAIDE SYMPHONY ORCHESTRA A FREE CONCERT IN ELDER PARK			
38	ARTISTS' WEEK/COMPOST	VISUAL ARTS FORUM			
21	SANDRA BERNHARD	SINGER, SATIRIST, COMEDIENNE			
45	THE BIG BACKYARD CONCERT	A MEGA-CONCERT OF OZROCK			
44	FAMILY PICNIC IN THE PARK	A FREE CONCERT FOR YOUNG FAMILIES IN ELDER PARK			
44	FESTIVAL FORUMS	DEBATING THE ISSUES OF THE 1996 FESTIVAL			
42	IN SPACES UNSUSPECTED	MERCURY CINEMA FILM PROGRAM			
21	MALCOLM MCLAREN	LIVING YESTERDAY TOMORROW			
44	OPENING NIGHT CONCERT	STARS OF THE FESTIVAL IN A FREE CONCERT IN ELDER PARK			8PM
37	OTA TAIKO DRUMMERS	SPECTACULAR DRUMMING FROM JAPAN			
44	SBS OUTDOOR FILM	FREE FILMS UNDER THE STARS			10.30PM
43	NANCY SINATRA	WITH SPECIAL GUEST LEE HAZELWOOD			
40, 41	VISUAL ARTS	BIENNIAL / EXHIBITIONS / VISITING ARTISTS			ALL DAY
42	WRITERS' WEEK	AUSTRALIA'S LEADING INTERNATIONAL LITERARY FESTIVAL			

BEFORE YOU BOOK CONSIDER BECOMING

# a Friend of the Festival

**THE BEST SEATS,  
THE BEST PRICES,  
THE BEST SERVICE.**

## PREFERENTIAL BOOKINGS

Friends' preferential mail bookings open November 1st.  
VIP booking facility - a dedicated Friends' BASS booking outlet/queue at the Festival Centre from December 1st 1995.

## SUBSTANTIAL DISCOUNTS

for every Festival performance. Savings of around 15% can make your membership pay for itself!

## DISCOUNTS ON OTHER SHOWS AND EVENTS BETWEEN FESTIVALS

including many Adelaide Festival Centre productions

## FREE ADMISSION TO THE EXCLUSIVE ANSETT FRIENDS' LOUNGE

situated at Red Square, Torrens Parade Ground • the perfect place to meet before and after the theatre • light refreshments available • opening from 6pm till late • mix with other friends and Festival supporters

## INSIDE INFORMATION' AND FESTIVAL NEWS THROUGH THE FRIENDS NEWSLETTER

plus home-delivered copies of other Festival and entertainment programs

# Membership Application

Send completed form to: Friends of the Adelaide Festival, GPO Box 1269 Adelaide SA 5001.

Name: Mr/Mrs/Miss/Ms/Dr. ....

Address: .....

.....Postcode .....

Telephone Day .....Night .....

Single Membership: \$55

Youth Membership (Full time students under 26 years): \$25

Family Membership: \$90 please nominate second family card holder

## METHOD OF PAYMENT

Cheque payable to Adelaide Festival

Bankcard  Visa  Diners  Mastercard  AmEx

Expiry Date ..... Signature .....



# A FEAST for your SENSES.



For seventeen days in March, performers and festival-goers alike, will hear, see, touch, taste and feel the best the artistic world has to offer. And at Telstra we are very proud to be involved in helping showcase Australia's talents to the world. So proud in fact, that we are thrilled to put our support, and our name, behind this spectacular event. The Telstra Adelaide Festival 96.



Telstra is a proud sponsor of  
the Australian Olympic Team.

The Telstra logo, consisting of the word 'Telstra' in a bold, sans-serif font with a stylized 'T'.

A D V A N C I N G   A U S T R A L I A

JSA TCM 0718